

MP3 Music Player

DMP-90 USER'S GUIDE

Please read all instructions in this User's Guide before using the product and keep it in a safe place for future reference.

Copyright Statement

No part of this publication may be reproduced in any form or by any means or used to make any derivative such as translation, transformation, or adaptation without permission from D-Link Corporation / D-Link Systems Inc., as stipulated by the United States Copyright Act of 1976.

FCC Certifications

This equipment has been tested and found to comply with the limits for a Class B digital device, pursuant to Part 15 of the FCC Rules. These limits are designed to provide reasonable protection against harmful interference in a residential installation. This equipment generates, uses and can radiate radio frequency energy and, if not installed and used in accordance with the instructions, may cause harmful interference to radio communications. However, there is no guarantee that interference will not occur in a particular installation. If this equipment does cause harmful interference to radio or television reception, which can be determined by turning the equipment off and on, the user is encouraged to try to correct the interference by one or more of the following measures:

Reorient or relocate the receiving antenna.

Increase the separation between the equipment and receiver.
Connect the equipment into an outlet on a circuit different from that to which the receiver is connected.
Consult the dealer or an experienced radio/TV technician for help.
Shielded interface cables must be used in order to comply with emission limits. You are cautioned that changes or modifications not expressly approved by the party responsible for compliance could void your authority to operate the equipment.

This device complies with Part 15 of the FCC rules. Operation is subject to the following two conditions: (1) This device may not cause harmful interference, and (2) This device must accept any interference received, including interference that may cause undesired operation.

LIMITED WARRANTY

D-Link Systems, Inc. ("D-Link") provides this limited warranty for its product only to the person or entity who originally purchased the product from D-Link or its authorized reseller or distributor.

Limited Hardware Warranty: D-Link warrants that the hardware portion of the D-Link products described below ("Hardware") will be free from material defects in workmanship and materials from the date of original retail purchase of the Hardware, for the period set forth below applicable to the product type ("Warranty Period") if the Hardware is used and serviced in accordance with applicable documentation; provided that a completed Registration Card is returned to an Authorized D-Link Service Office within ninety (90) days after the date of original retail purchase of the Hardware. If a completed Registration Card is not received by an authorized D-Link Service Office within such ninety (90) period, then the Warranty Period shall be ninety (90) days from the date of purchase.

Product Type	Warranty Period
Product (excluding power supplies and fans), if purchased and delivered in the fifty (50) United States, or the District of Columbia (USA)	As long as the original purchaser still owns the product
Product purchased or delivered outside the USA	One (1) Year
Power Supplies and Fans	One (1) Year
Spare parts and spare kits	Ninety (90) days

D-Link's sole obligation shall be to repair or replace the defective Hardware at no charge to the original owner. Such repair or replacement will be rendered by D-Link at an Authorized D-Link Service Office. The replacement Hardware need not be new or of an identical make, model or part; D-Link may in its discretion replace the defective Hardware (or any part thereof) with any reconditioned product that D-Link reasonably determines is substantially equivalent (or superior) in all material respects to the defective Hardware. The Warranty Period shall extend for an additional ninety (90) days after any repaired or replaced Hardware is delivered. If a material defect is incapable of correction, or if D-Link determines in its sole discretion that it is not practical to repair or replace the defective Hardware, the price paid by the original purchaser for the defective Hardware will be refunded by D-Link upon return to D-Link of the defective Hardware. All Hardware (or part thereof) that is replaced by D-Link, or for which the purchase price is refunded, shall become the property of D-Link upon

replacement or refund.

Limited Software Warranty: D-Link warrants that the software portion of the product ("Software") will substantially conform to D-Link's then current functional specifications for the Software, as set forth in the applicable documentation, from the date of original delivery of the Software for a period of ninety (90) days ("Warranty Period"), if the Software is properly installed on approved hardware and operated as contemplated in its documentation. D-Link further warrants that, during the Warranty Period, the magnetic media on which D-Link delivers the Software will be free of physical defects. D-Link's sole obligation shall be to replace the non-conforming Software (or defective media) with software that substantially conforms to D-Link's functional specifications for the Software. Except as otherwise agreed by D-Link in writing, the replacement Software is provided only to the original licensee, and is subject to the terms and conditions of the license granted by D-Link for the Software. The Warranty Period shall extend for an additional ninety (90) days after any replacement Software is delivered. If a material non-conformance is incapable of correction, or if D-Link determines in its sole discretion that it is not practical to replace the non-conforming Software, the price paid by the original licensee for the non-conforming Software will be refunded by D-Link; provided that the non-conforming Software (and all copies thereof) is first returned to D-Link. The license granted respecting any Software for which a refund is given automatically terminates.

What You Must Do For Warranty Service:

1. **Registration Card.** The Registration Card provided at the back of this manual must be completed and returned to an Authorized D-Link Service Office for each D-Link product within ninety (90) days after the product is purchased and/or licensed. The addresses/telephone/fax list of the nearest Authorized D-Link Service Office is provided in the back of this manual. **FAILURE TO PROPERLY COMPLETE AND TIMELY RETURN THE REGISTRATION CARD MAY AFFECT THE WARRANTY FOR THIS PRODUCT.**

2. **Submitting A Claim.** Any claim under this limited warranty must be submitted in writing before the end of the Warranty Period to an Authorized D-Link Service Office. The claim must include a written description of the Hardware defect or Software nonconformance in sufficient detail to allow D-Link to confirm the same. The original product owner must obtain a Return Material Authorization (RMA) number from the Authorized D-Link Service Office and, if requested, provide written proof of purchase of the product (such as a copy of the dated purchase invoice for the product) before the warranty service is provided. After an RMA number is issued, the defective product must be packaged securely in the original or other suitable shipping package to ensure that it will not be damaged in transit, and the RMA number must be prominently marked on the outside of the package. The packaged product shall be insured and shipped to D-Link, 53 Discovery Drive, Irvine CA 92618, with all shipping costs prepaid. D-Link may reject or return any product that is not packaged and shipped in strict compliance with the foregoing requirements, or for which an RMA number is not visible from the outside of the package. The product owner agrees to pay D-Link's reasonable handling and return shipping charges for any product that is not packaged and shipped in accordance with the foregoing requirements, or that is determined by D-Link not to be defective or non-conforming.

What Is Not Covered:

This limited warranty provided by D-Link does not cover:

1. Products that have been subjected to abuse, accident, alteration, modification, tampering, negligence, misuse, faulty installation, lack of reasonable care, repair or service in any way that is not contemplated in the documentation for the product, or if the model or serial number has been altered, tampered with, defaced or removed;
2. Initial installation, installation and removal of the product for repair, and shipping costs;
3. Operational adjustments covered in the operating manual for the product, and normal maintenance;
4. Damage that occurs in shipment, due to act of God, failures due to power surge, and cosmetic damage; and
5. Any hardware, software, firmware or other products or services provided by anyone other than D-Link.

Disclaimer of Other Warranties: EXCEPT FOR THE LIMITED WARRANTY SPECIFIED HEREIN, THE PRODUCT IS PROVIDED "AS-IS" WITHOUT ANY WARRANTY OF ANY KIND INCLUDING, WITHOUT LIMITATION, ANY WARRANTY OF MERCHANTABILITY, FITNESS FOR A PARTICULAR PURPOSE AND NON-INFRINGEMENT. IF ANY IMPLIED WARRANTY CANNOT BE DISCLAIMED IN ANY TERRITORY WHERE A PRODUCT IS SOLD, THE DURATION OF SUCH IMPLIED WARRANTY SHALL BE LIMITED TO NINETY (90) DAYS. EXCEPT AS EXPRESSLY COVERED UNDER THE LIMITED WARRANTY PROVIDED HEREIN, THE ENTIRE RISK AS TO THE QUALITY, SELECTION AND PERFORMANCE OF THE PRODUCT IS WITH THE PURCHASER OF THE PRODUCT.

Limitation of Liability: TO THE MAXIMUM EXTENT PERMITTED BY LAW, D-LINK IS NOT LIABLE UNDER ANY CONTRACT, NEGLIGENCE, STRICT LIABILITY OR OTHER LEGAL OR EQUITABLE THEORY FOR ANY LOSS OF USE OF THE PRODUCT, INCONVENIENCE OR DAMAGES OF ANY CHARACTER, WHETHER DIRECT, SPECIAL, INCIDENTAL OR CONSEQUENTIAL (INCLUDING, BUT NOT LIMITED TO, DAMAGES FOR LOSS OF GOODWILL, WORK STOPPAGE, COMPUTER FAILURE OR MALFUNCTION, LOSS OF INFORMATION OR DATA CONTAINED IN, STORED ON, OR INTEGRATED WITH ANY PRODUCT RETURNED TO D-LINK FOR WARRANTY SERVICE) RESULTING FROM THE USE OF THE PRODUCT, RELATING TO WARRANTY SERVICE, OR ARISING OUT OF ANY BREACH OF THIS LIMITED WARRANTY, EVEN IF D-LINK HAS BEEN ADVISED OF THE POSSIBILITY OF SUCH DAMAGES. THE SOLE REMEDY FOR A BREACH OF THE FOREGOING LIMITED WARRANTY IS REPAIR, REPLACEMENT OR REFUND OF THE DEFECTIVE OR NON-CONFORMING PRODUCT.

GOVERNING LAW: This Limited Warranty shall be governed by the laws of the state of California. Some states do not allow exclusion or limitation of incidental or consequential damages, or limitations on how long an implied warranty lasts, so the foregoing limitations and exclusions may not apply. This limited warranty provides specific legal rights and the product owner may also have other right.

■ CONTENTS

• What is MP3?	1
• What is the DMP-90?	1
• General System Requirements	1
• Installing DMP-90.exe file	2
• DMP-90 Accessories	2
• DMP-90 Player Controls	3
• The DMP-90 Smart Media card	4
• Connecting DMP-90 Player to PC	5
• Initializing Internal Memory Smart Media card	6
• Downloading Files from PC to DMP-90	7
• Power On/Off	8
• Key Lock	8
• Playing MP3 files	9
• Selecting the desired MP3 file	10
• Starting Playback from the Middle of MP3 file	10
• Repeat	11
• Random	11
• Equalizer mode	11
• Selecting Internal Memory/External Memory	12
• Volume	12
• Troubleshooting	13
• Warning	14
• Warranty	15
• Specifications	16
• Appendix	17

■ WHAT IS MP3?

MP3 (MPEG1 layer 3) is a standard audio file format, which compresses a sound sequence into approximately one-twelfth the size of the original file. MP3 files are relatively small while retaining the sound quality of the original file.



You must be aware that distributing copies of MP3 file without permission is against copyright law. You should use the MP3 encoding software included in the DMP-90 package only for personal purposes.

■ What is the DMP-90?

The DMP-90 is a portable digital audio player. The DMP-90 is user-friendly with easy to follow downloading and operating procedures. Music can be downloaded from your PC to the DMP-90. The DMP-90 stores all your music files in flash memory. The DMP-90 stores up to 1/4 hour of MP3 music compressed at 128 Kbps for your listening pleasure. Also, skipping is eliminated due to the DMP-90's solid state components and design.

The DMP-90 comes with 16MB of built-in flash memory and a slot for a removable Smart Media Card that extends the memory by up to 32 MB.

■ SYSTEM REQUIREMENTS

- Windows 95/98
 - CD-Rom driver
 - 16MB RAM or above
 - One free parallel port that supports ECP mode.
- How to set parallel port to ECP mode, please refer to Appendix.



INSTALLING the DMP-90.exe File

1. Turn on your PC.
2. Insert the installation CD.
3. Open setup.exe in the CD-Rom driver.
4. The welcome screen pops up. Click "Next".
5. Read the License Agreement. Click "Yes" to agree to it.
6. You may select a destination folder. Then click "Next".
7. The installation is finished.



DMP-90 Accessories



DMP-90 Player



User's guide



AA 1.5V Battery



Headphone



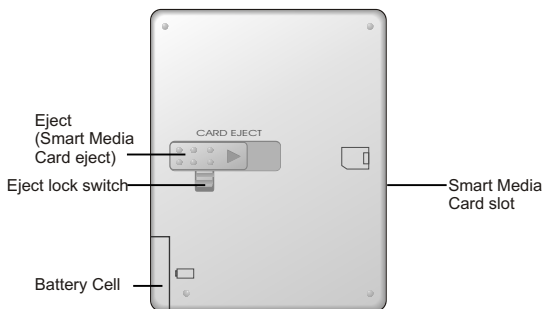
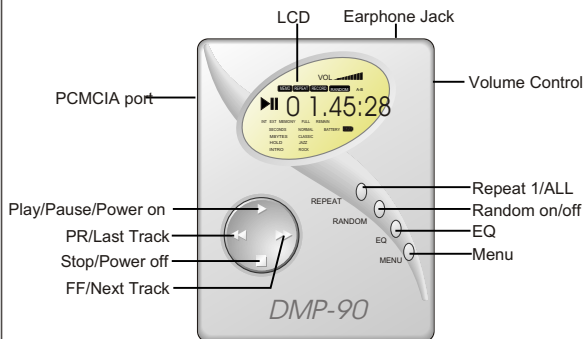
PC connecting cable



Install CD Rom x1



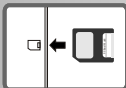
DMP-90 Player CONTROLS



■ THE DMP-90 Smart Media Card

The expansion card, purchased separately, enables you to store more MP3 files and extend the DMP-90's playing time. Note: external memory is not included in your DMP-90. The card that comes installed in the device is only a placeholder for a Smart Media card.

1



INSERTING

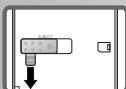
Power off the DMP-90. Check the orientation of the Smart Media Card and insert it into the card slot.

2



- Turn on the power of the player.
- Press the "MENU" button once, then press "PLAY" once to switch to external memory.
- "EXT MEMORY" appears on the LCD.

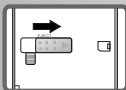
3



EJECTING

Unlock the lock switch.

4



Power the DMP-90 off. Push eject switch to eject the Smart Media Card.

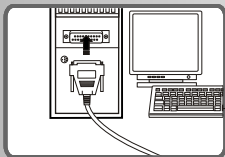


The DMP-90 is a proprietary device. The DMP-90 uses a different file format than other MP3 players. The DMP-90 is not recommended for use with other PC cameras or other digital cameras. Once the expansion card is formatted for the DMP-90 it cannot be reformatted for use with other MP3 systems.

■ CONNECTING the DMP-90 to a PC

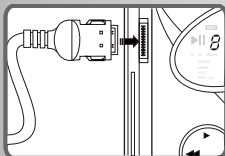
1. Power off the DMP-90 before connecting it to a PC.
2. To download MP3 files from your PC to the DMP-90, the player must be connected to your PC. The DMP-90 connects to your PC through the parallel port. Disconnect the printer cable, if necessary, before attaching the cable for the DMP-90.

1

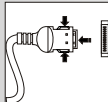


Connect the PC-connecting cable to the parallel port on your PC.

2



Connect the other end of the connecting cable to the PCMCIA port.



To remove the plug from the DMP-90 player, push the grips of the plug, and then pull out the plug.

3



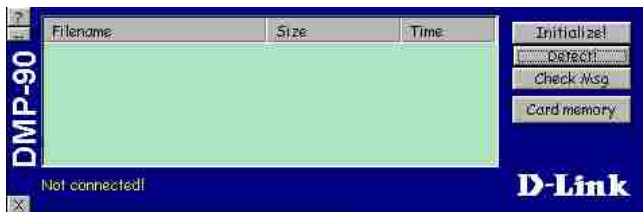
"conn" appears on the LCD

INITIALIZING INTERNAL MEMORY OR SMART MEDIA CARD

- Open the DMP-90.exe file in the PC. You must initialize the memory before attempting to download files.



- To copy files from your PC to the DMP-90, select the desired memory (Built-in flash Memory or Smart Media Card) by clicking on the icon of [card memory].



- Click on the icon of initialize, then click "Yes" (Built-in flash Memory or Smart Media Card must be initialized before downloading files to flash memory or Smart Media card).

* Warning: After initialization, all information will be erased.

■ DOWNLOADING FILES FROM PC TO DMP-90



1. Go to the location which contains the MP3 files.
2. Select the desired MP3 files and drag the MP3 files to the download file window by holding the left mouse button.



- Display shows the file copying status on the DMP-90.exe file.

■ CHECK MP3 FILES

- Click the "Detect" or "Check song" button once to check the download Mp3 files.

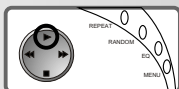
■ DELETE MP3 FILES IN THE DMP-90 PLAYER

1. Connect the DMP-90 player and the PC with the connecting cable.
2. Open the DMP-90.exe file.
3. Select the desired MP3 file.
4. Press the "Delete" button on the keyboard and click "Yes" to confirm.
5. Check the remaining MP3 files(see: CHECK MP3 FILES)for next delete.

■ POWER ON/OFF

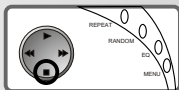
1

Power on the player by pressing and holding the PLAY button (▶).



2

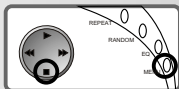
Press the STOP (■) twice to turn off the player.



■ KEY LOCK

1

Press "Menu" button and then press STOP (■) to lock keys. To free the keys, press "MENU" button and then press STOP (■) again.



■ Playing Music on your DMP-90

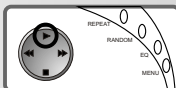
- You must load the music you want to play into the DMP-90
- To play the MP3 files stored in the built-in memory select "INT MEMORY". To play the MP3 files stored in the Smart Media card, select "EXT MEMORY".

- LCD Display MP3 Menu



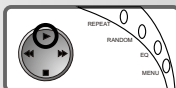
1

Press and hold the "PLAY" button (▶) to turn on the player. Press the "PLAY" button (▶) once to playback.



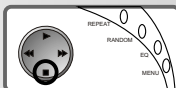
2

Press the "PLAY" button (▶) again to pause.



3

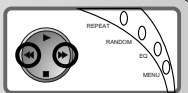
Press the "STOP" button (■) to stop the playback. Press the "STOP" button (■) again to turn off power.



■ SELECTING THE DESIRED MP3 FILE

1

Use the "FORWARD" (▶▶) or "REVERSE" (◀◀) button to select the desired track.

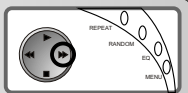


- The MP3 files stored in the built-in memory will be played before those in the Smart Media card.

■ STARTING PLAYBACK FROM THE MIDDLE OF MP3 FILE

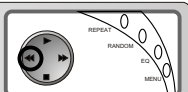
1

Press the "FORWARD" (▶▶) button and hold for searching track.



2

Press the "REVERSE" (◀◀) button and hold for searching track.

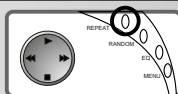


REPEAT

1

Press the "REPEAT" button and select either "REPEAT 1", "REPEAT All" or playing.

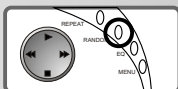
To repeat the current track, select "Repeat one".
To repeat all the tracks, select "All".



RANDOM

1

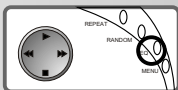
Press the "RANDOM" button once to play tracks randomly. Press the "RANDOM" button again to cancel the random mode.



EQUALIZER MODE

1

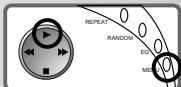
Press the "EQ" button and select either normal or "ROCK", "JAZZ" or "CLASSIC" effects.



■ SELECTING INTERNAL OR EXTERNAL MEMORY

1

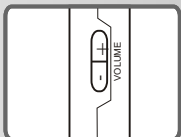
When the player is in stop mode, press MENU button once and then press PLAY button(▶) once to select internal memory or external memory.



■ VOLUME

1

Increase and decrease volume.
Press (+) or (-) to increase/decrease volume.



■ TROUBLESHOOTING

- If the DMP-90 does not work, check the following before calling for service

1

DMP-90 does not work or nothing is displayed on the LCD:

- Check the capacity of the batteries, one 1.5V AA-size battery is required.
- Make sure the battery is inserted into correct polarity (+) and (-).

2

The buttons of the DMP-90 player do not work:

- Check if "HOLD" is displayed on the LCD. While the "HOLD" status is on, all the buttons do not work. (Press the "MEMU" and the "STOP" button to unlock the buttons).

3

No sound after the "PLAY" button is pressed:

- Make sure MP3 files are stored in the built in memory or Smart Media card.

4

Cannot download the Mp3 files:

- Make sure the DMP-90 player is connected to your PC.

5

The Smart Media card cannot be inserted:

- There are two types of Smart Media cards, one works at 3.3V and the other at 5V. (Refer to the diagram). The 5V Smart Media card cannot be used in the DMP-90 player.

6

The files on the built-in memory or the Smart Media card are not recognized:

- DMP-90 player cannot recognize the Smart Media Cards that have been used by other MP3 players and digital cameras.
- Use the DMP-90.exe file to format the built-in memory and the Smart Media Card.

■ WARNING

- Read all instructions below before using the DMP-90 player.

1

Do not drop the DMP-90.

- Vibration during walking or exercising should not affect the DMP-90. However, dropping or placing heavy objects on it may cause it to malfunction.

2

Do not get the DMP-90 wet.

- Wipe the DMP-90 immediately with a dry cloth if any water gets on it.

3

Storing the DMP-90 player.

- Do not store the DMP-90 in an area with high humidity, strong magnetic fields or high heat. Avoid storing the DMP-90 in direct sunlight.



This equipment may be reset by unintentional electrostatic discharge during operation.

■ WARRANTY

1

The DMP-90 player comes with a one year-limited warranty. D-Link Systems Inc., guarantees that the DMP-90 player and all related accessories will be repaired or replaced within one year from the date of purchase. This warranty applies against defects in materials or workmanship during assembly or shipping. This warranty applies only to the original purchaser of the DMP-90 player.

This warranty does not cover problems associated with misuse and or failure to be compatible with any other product.

■ TRADEMARK

1

DMP-90 and DMP-90 explorer are the trademarks of D-Link Systems Inc. All other trade names referenced in this user's guide are trademarks of their respective manufacturers.

■ INFORMATION

1

To obtain further information, please refer to following web site <http://dlink.com>.

■ Smart Media Card

1

The Smart media Card is a smart media Flash Memory Card with the DMP-90 MP3 player's physical format. User(s) can purchase a standard Smart Media card and format it for the by DMP-90 Mp3 to increase the memory.



SPECIFICATIONS

- Memory : 16MB Built-In, Expandable with Smart Media
- S/N ratio : >90dB
- Harmonic distortion : <0.1%
- Max. Output : 15mW (16 ohm)
- Frequency Range : 20Hz-20 kHz
- Power : AA 1.5V x 1
- Display : LCD
- Slot : 1 slot for Smart Media Card
- Transmission Rate : 400kbps
- Interface : 15pins PCMCIA Port
- Dimensions : 64x82x18mm
- Weight : 70g

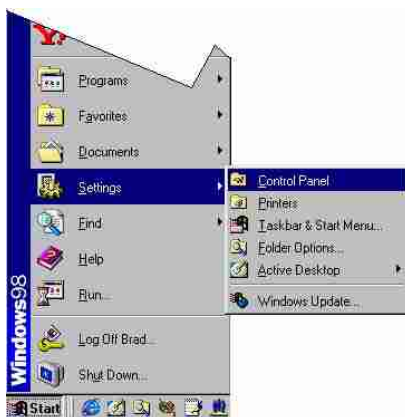
If the DMP-90 can't be detected by DMP-90.exe while it's still turned on, it is likely that your computer is using a non-compliant Parallel Port setting. The DMP-90 requires that you have an ECP-compliant Parallel port.

Parallel ports are typically used for the connection of a printer. As a result the computer industry has a number of communication methods that have changed over the years for the Parallel port. SPP, EPP, and ECP are a number of Parallel port modes. The current ECP is required to ensure that the DMP-90 can communicate with your computer. To check if your Parallel port is set to ECP, please go to [\(1\) How can I determine if my Parallel port is set to ECP?](#)

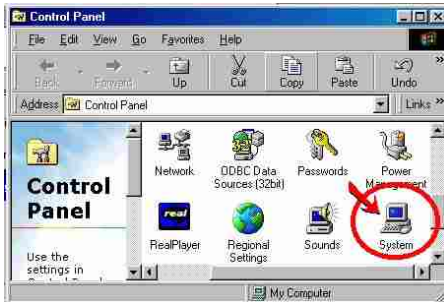
[\(1\) How can I determine if my Parallel port is set to ECP?](#)

To check if your computer's Parallel port is currently configured to ECP please follow these steps:

A) Click Start->Setting->Control Panel



B) Double Click the System Icon in the Control Panel



C) Select the "Device Manager" Tab at the top of the System Properties Window, Click the (+) next to the line that reads "Ports (COM & LPT)"



D) At this point a line should read "ECPPrinter Port (LPT1)". If it does and the unit still does not function, please contact D-Link Technical Support at (949)788-0805 or ustech@dlink.com. If it does not read ECP, please go to [\(2\) How can I set my Parallel port to ECP?](#)

(2) How do I set my Parallel Port to ECP?

The DMP-90 requires your Parallel port to be set to ECP to function properly. Most computers will allow you to change this setting in the BIOS. Please note that most users are not comfortable with changing BIOS settings and D-Link does not recommend that you change your BIOS settings as it may cause your computer to stop functioning. D-Link recommends that you contact the maker of your motherboard or computer for detailed instructions on how to set your Parallel port to ECP mode.

If you are an advanced user and are comfortable with making the change, most BIOS' will have a specific line item pertaining to Parallel Port Mode. Find this line and follow the directions in your BIOS, or provided by your computer/motherboard manufacturer, to change this setting to ECP. It is normally a simple matter of toggling the Parallel Port Modes using the PgUp/PgDn keys to find the right setting. Once you have made the change, Save and Quit your BIOS set up program to reboot your computer.

Please note that once your computer reboots, Windows 95, 98, and 98SE will find the new ECP Parallel port and attempt to install the drivers. You will need to provide your Windows installation CD if prompted. Once you have completed this change, follow the directions in (1) How can I determine if my Parallel port is set to ECP? to double check your Parallel port settings.