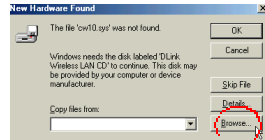


APPENDIX A Providing Driver Files

If prompted for the driver files, insert the driver CD.

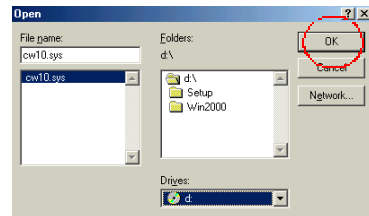
Click **Browse**.



Select the CD-ROM drive.

Click **OK**.

Windows will copy the necessary files.



Quick Install Guide for Windows 2000

DWL-120

11 Mbps Wireless USB Adapter

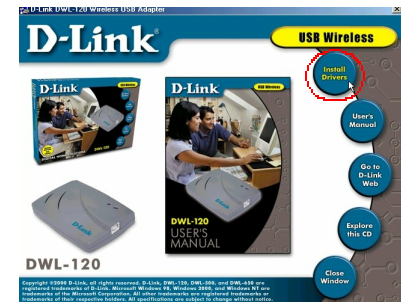
1

Installing the Drivers

Note: Please do not connect the DWL-120 wireless USB adapter until advised to do so.

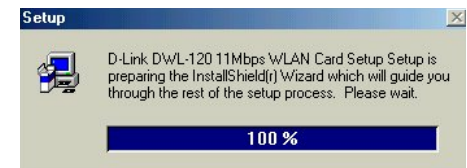
With the computer turned **ON**, insert the driver CD for the DWL-120 Wireless USB adapter into the CD-ROM.

The driver CD will automatically load.
Click on **“Install Drivers.”**



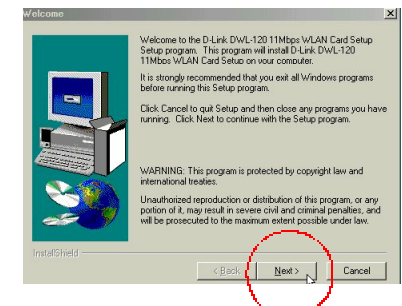
Windows will recognize the DWL-120 Wireless USB adapter.

This screen will appear for just a moment.



When the following “Welcome” screen is displayed,

Click **Next**.

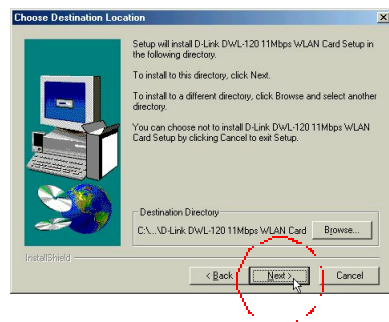


1 Installing the Drivers *continued*

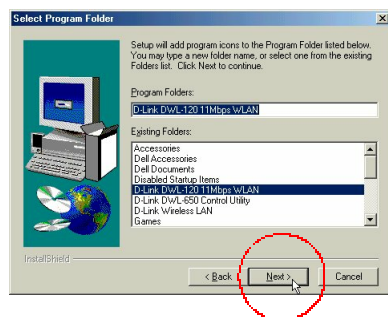
Windows will prompt for the destination folder.

Click Next to accept the selected folder.

Otherwise, click “Browse,” and select an alternate folder.



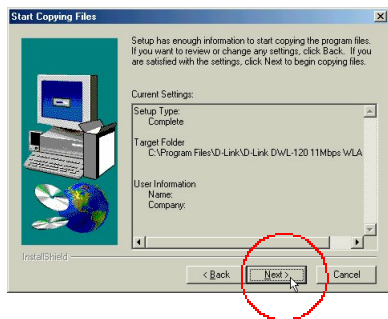
Click Next, on the following screen.



When the following screen is displayed,

Click Next.

Windows will finish loading system files.



2 Finishing Installation

Insert the DWL-120 Wireless USB adapter into an available USB port.

Windows will recognize the new hardware.

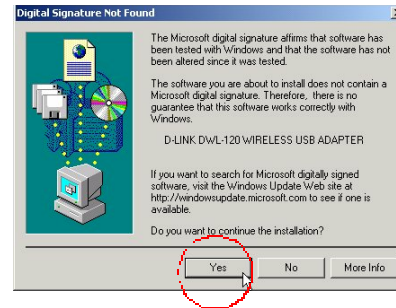


2

Finishing Installation *continued*

The following screen will appear only during the initial installation.

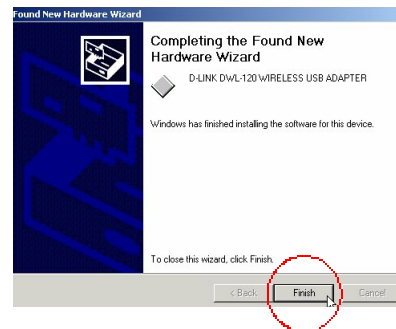
Click Yes to continue.



At the next window,

Click Finish.

Restart the computer to complete the installation.



To check that the adapter is working, click on the configuration utility icon in the task bar. Make sure that there is a wireless connection under the “status tab.”

2

Finishing Installation *continued*

The “Add New Hardware Wizard” screen will appear.

Click Next.

In the following dialog box, make sure that “Search for a suitable driver for my device” is selected.

Click Next.

On the next screen, make sure that the “CD-ROM drive” box is selected in the location box.

Click Next.

The driver files will be found on the CD, as shown in the following screen.

Note: If Windows is unable to find the drivers, refer to Appendix A for browsing the CD-ROM drive.

Click Next.

