

desXcape

150DM



Philips DesXcape 150DM
Detachable Monitor

User's Manual



PHILIPS

	2	About This Manual
GETTING STARTED	3	Before You Begin
(A COMPLETE START GUIDE)	7	Hardware Setup
	9	Software Setup
	15	First-timer Tutorial
LEARN MORE	19	Product Care
	20	The DesXcape Experience
	24	Optimize and Customize
	29	Glossary
QUICK TROUBLESHOOTING	33	Before Setup
	34	During Hardware Setup
	34	During Software Setup
	35	During Use
APPENDIX	38	Introduction to DesXcape 150DM
	40	Specifications
	41	Warranty
	43	Additional Information & Customer Care
	44	Regulatory Information
	49	Copyright
	49	Philips LCD Panel Pixel Defect Policy

This is the User's Manual of Philips DesXcape 150DM. This manual is a complete start guide as well as the reference book for your DesXcape 150DM.

This User's Manual, a Quick Start Guide, and an interactive Philips DesXcape 150DM Tutorial are materials designed to help you enjoy the best DesXcape 150DM experience.

For general users, it is recommended to use such materials in the following order:

- 1 Start with the Getting Started chapter of this User's Manual to setup your DesXcape 150DM and logon to your computer.
- 2 Then, go through the interactive Philips DesXcape 150DM Tutorial that your computer will automatically launch for you.
- 3 Finally, come back to this User's Manual to learn more about your DesXcape 150DM.

Experienced users may want to use these materials in the following order:

- 1 Start with Quick Start Guide to setup your DesXcape 150DM and logon to your computer. Refer to the corresponding sections in this User's Manual when in doubt.
- 2 Then, go through the interactive Philips DesXcape 150DM Tutorial that your computer will automatically launch for you.
- 3 Finally, come back to this User's Manual to learn more about your DesXcape 150DM.

If you have questions after DesXcape 150DM is set up on your computer, come back to this User's Manual or use the Help and Support Center on your computer for more information.

This chapter provides detailed steps and complete information to guide you when setting up your DesXcape 150DM for the first time. Though the process is simple and straightforward, it is still recommended that you read and follow these steps carefully.

Before You Begin

Prerequisites

- ! If you do not have a monitor connected to your computer yet, you may perform the following checking after **Hardware Setup**.

Before using your DesXcape 150DM, be sure the following requirements are met:

- 1 Your computer must have **Microsoft Windows XP Professional** installed.

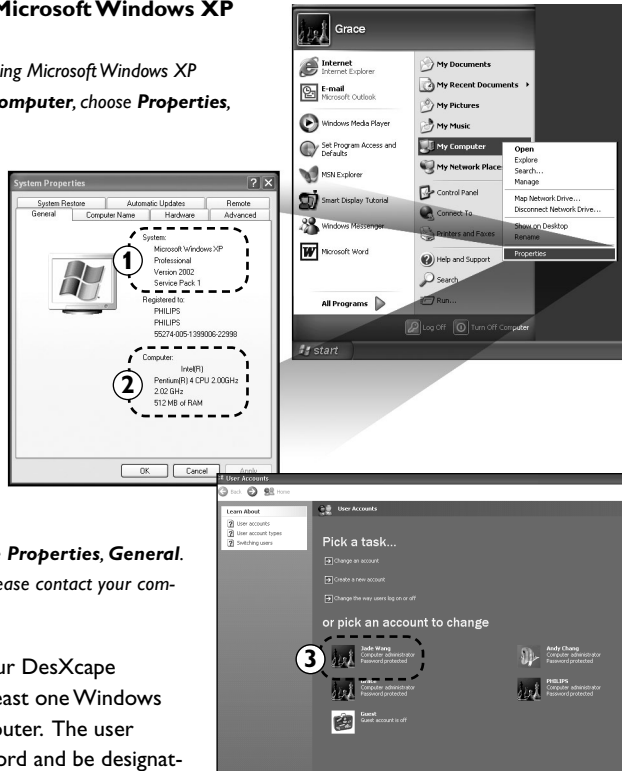
To check if your computer is running Microsoft Windows XP Professional, right-click on **My Computer**, choose **Properties, General**. If you still have further questions, please contact your computer vendor.

- 2 Your computer must have the processing power of **Pentium III running at 700 MHz or higher, 128MB DRAM, and two unused USB ports**.

To check if the processing power and DRAM of your computer, find and right-click on **My Computer**, choose **Properties, General**. If you have further questions, please contact your computer vendor.


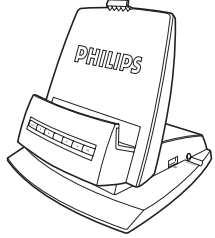
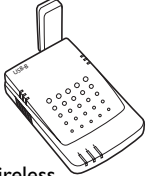
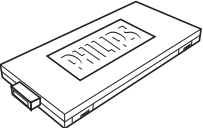
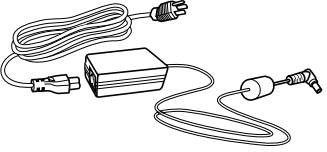
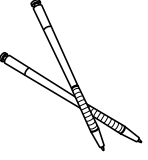
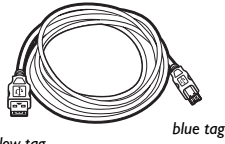
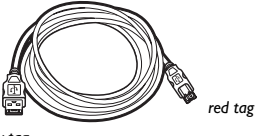
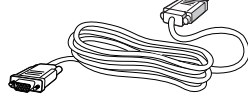

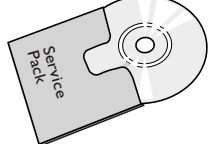


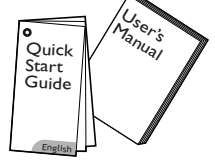
- 3 Before starting to setup your DesXcape 150DM, you must have at least one Windows user account on your computer. The user account must have a password and be designated a **computer administrator**.

To determine your user account status, click **Start menu, Control Panel, User Accounts** for the information. If you have further question, please contact your computer vendor.



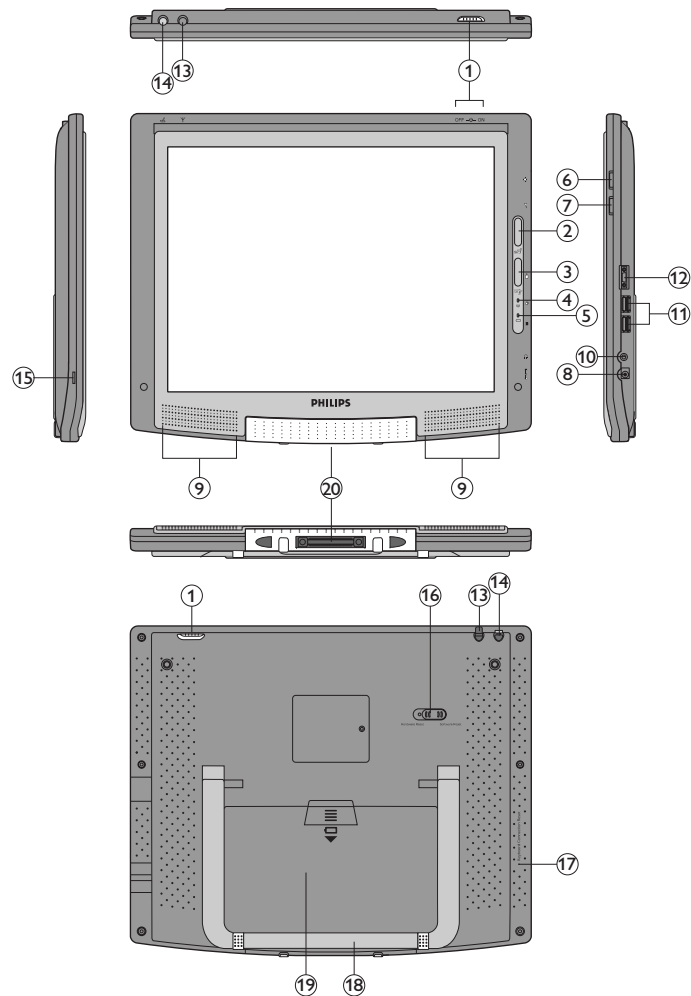
Unpacking

PACKING LIST— the DesXcape 150DM carton contains the following items:

		
DesXcape 150DM	Base station	
		
Philips wireless network adaptor	Battery	AC power adaptor
		
Stylus (two)	USB cable 1	USB cable 2
		
VGA cable	Mini-VGA cable	Microsoft Windows Service Pack 1 CD
		
Audio cable	DesXcape 150DM Setup CD	Quick Start Guide User's Manual (this book)

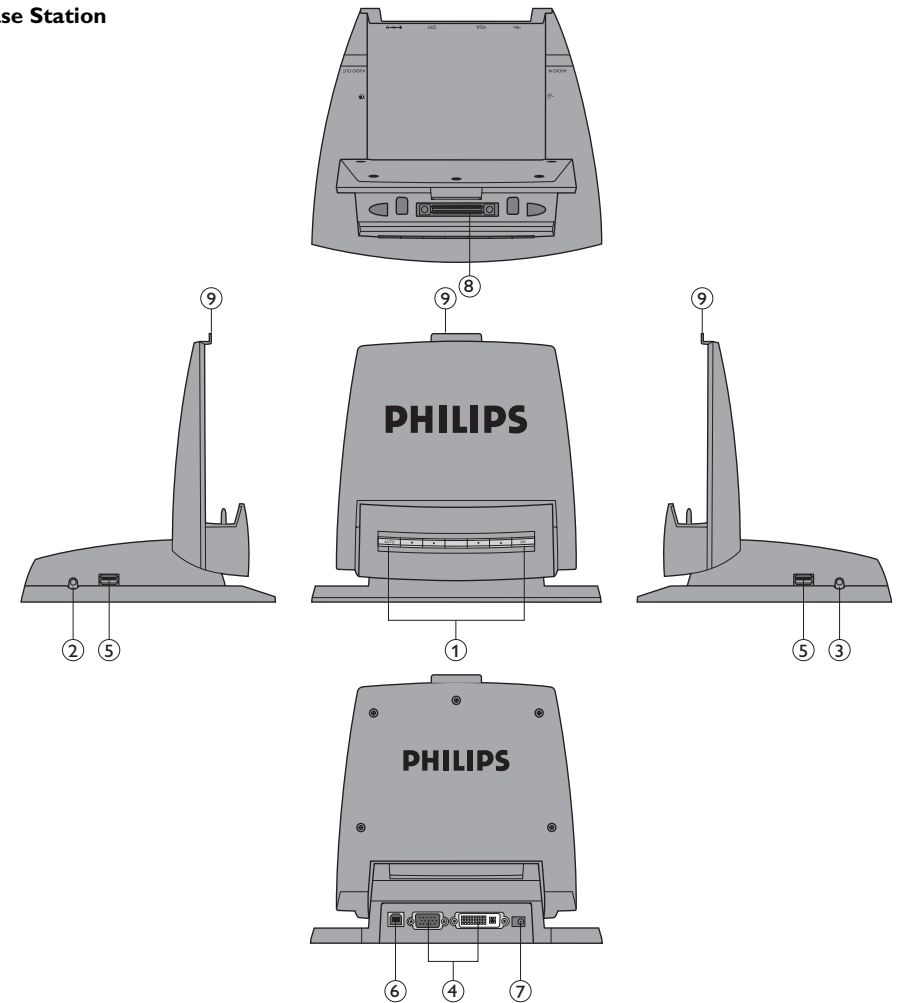
Physical Appearance

DesXcape 150DM



- | | | |
|------------------------------|------------------------|--|
| 1 Power switch | 8 DC power-in | 15 Kensington lock slot |
| 2 Dashboard button | 9 Speaker | 16 Software/Hardware reset button |
| 3 Input Panel button | 10 Headphone jack | 17 Reset button for optional wireless keyboard |
| 4 Wireless signal indicator | 11 USB | 18 Monitor support |
| 5 Battery indicator | 12 Mini-VGA out | 19 Battery cover |
| 6 Brightness adjusting wheel | 13 Antenna and housing | 20 Base station connector |
| 7 Volume adjusting wheel | 14 Stylus housing | |

Base Station

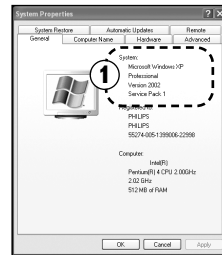


- | | |
|----------------|----------------------------|
| 1 OSD button | 6 USB (type B) |
| 2 Audio out | 7 DC power-in |
| 3 Audio in | 8 DesXcape 150DM connector |
| 4 VGA/DVI-D | 9 DesXcape 150DM latch |
| 5 USB (type A) | |

Installing Windows XP Service Pack 1

DesXcape runs on Microsoft Windows XP Professional Edition with Service Pack 1. If you have not yet installed Windows XP Service Pack 1 (or higher) on your computer, please follow this step. If you already have most recent Windows XP Service Pack installed on your computer, please skip this step and go to the next Hardware Setup section.

To check if you have Windows XP Service Pack 1 installed, right-click on My Computer, choose Properties, General. If you do not see Service Pack information is displayed, you do not have Service Pack installed.

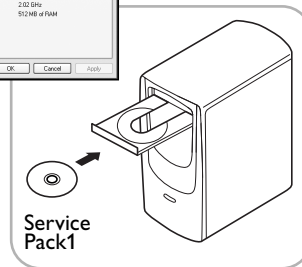


To install Windows XP Service Pack 1

- 1 Put the Windows XP Service Pack 1 CD into CD-ROM drive

- 2 Run XPSP1.exe from CD-ROM drive and Service Pack 1 is automatically installed.

Alternative: Open the **Start menu**. Choose **My Computer** and double-click on **XPSP1.exe** icon on your CD-ROM drive.



If you experience problems with any of your existing application after the Microsoft Windows XP Service Pack 1 is installed, please go to the Microsoft website for additional information or contact your application providers.

Hardware Setup

Cable Setup

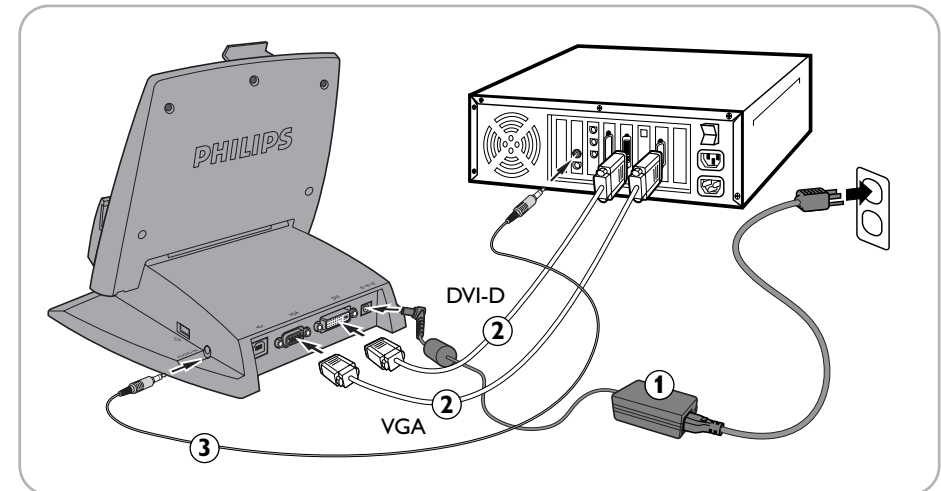
In this section, you will set up the initial hardware environment for your DesXcape 150DM.

- 1 Connect the power cord to the AC power adaptor, plug it into the base station and then into a power outlet.
- 2 If you plan to use DesXcape 150DM as your desktop monitor, make sure your computer is running a resolution of 1024 x 768 or lower. **Plug the VGA cable into the base station and then into your computer.**

To check and adjust the resolution of your computer, right-click on your Windows Desktop. Screen Resolution is located under **Properties, Settings**. For additional information about your computer's resolution, please contact your computer vendor.

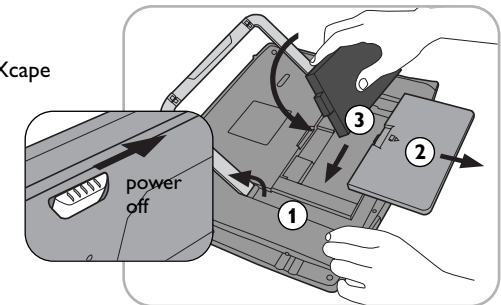
For users with DVI-D video interface, instead of using the included VGA cable, plug your own DVI-D cable to the DVI-D port on the base station.

- 3 If you want to use the audio output on your base station for speakers or a headset, plug the included audio cable into the **audio in** port on your base station, and then into the **audio out** port on your computer.



Load Battery

- 1 Make sure the power switch of your DesXcape 150DM is in the power-off position.
- 2 Install the battery into DesXcape 150DM, and you will see the startup screen for a few seconds before it goes off.

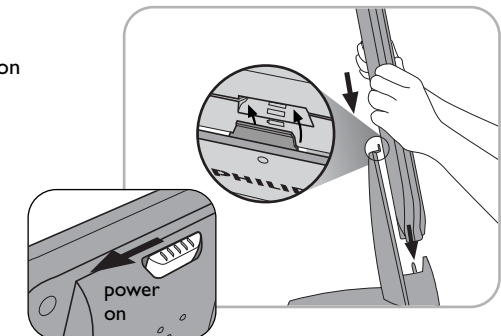


Get Ready

- 1 Place DesXcape 150DM on the base station
- 2 Power on your computer
- 3 Power on DesXcape 150DM

Additional Hardware Setup

During the setup process, on screen prompts will let you know when it is time to install additional hardware.



Software Setup

This section will guide you through software installation and additional hardware setup procedures for your DesXcape 150DM.

Insert DesXcape 150DM Setup CD into your computer's CD-ROM drive. The Setup Wizard will start automatically.

If the Setup Wizard does not start automatically, you can start it manually by opening Setup.exe from your CD-ROM drive. Select your CD-ROM drive by opening the Start menu and then choosing My Computer.

Smart Display Services Setup

Below are the sequence of screens and an explanation for each screen.

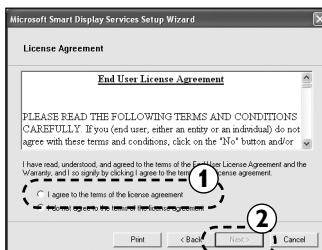


Please select the language you want for DesXcape 150DM and rest of the installation process.



Step 1: Welcome to Smart Display Services Setup Wizard

Click **Next** to continue.



Step 2: License Agreement

Click on the **I agree to the terms of the license agreement** box and then **Next**.

If you do not agree to the terms of the license agreement, the setup program will end and software for DesXcape 150DM will not be installed on your computer.

Step 3: Enable Remote Desktop

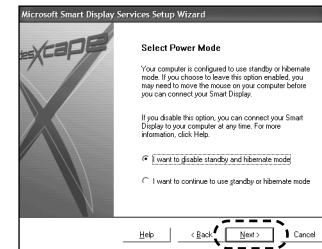
If your computer has already been set to enable Remote Desktop, this screen will not be displayed.

Click **Next** to continue.

Step 4: Select Power Mode

Click **Next** to continue.

It is highly recommended that you select "I want to disable standby and hibernate mode" for best experience.



Step 5: DesXcape 150DM Driver Installation

Click **Next** to continue.

Step 6: Connect Wireless Network Adaptor

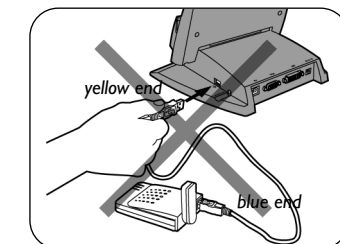
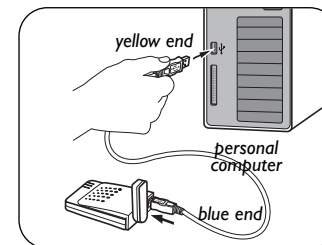
Connect Philips wireless network adaptor to your computer by connecting the blue end of the included USB cable to the Philips wireless network adaptor's blue socket. Then connect the yellow end of the USB cable directly to your computer's USB port.

(Note: **DO NOT** connect the yellow end to the base station.)

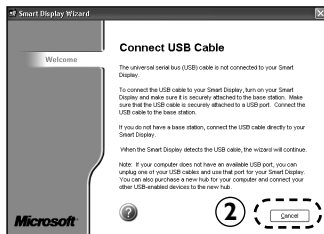
Follow and complete the **Found New Hardware Wizard** if it pops up.

Ignore and cancel the **Network Setup Wizard** if it pops up.

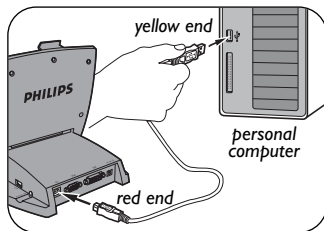
Click **Next** to continue.



Situation A



Situation B



Step 7 Depending on the language you selected for your DesXcape 150DM, you will see either:

Situation A

1 Smart Display Services Installed screen

2 Connect USB Cable screen

Connect the red end of the included USB cable to the base station's red socket. Next, connect the yellow end of the USB cable to your computer's USB port.

Note: DO NOT connect the yellow end back to the BASE STATION.

Wait for a few moments before the computer recognizes DesXcape 150DM and shows the Next button.

Click **Next** to continue.

Situation B

1 Connect USB Cables screen

Connect the red end of the included USB cable to the base station's red socket. Next, connect the yellow end of the USB cable to your computer's USB port.

Note: DO NOT connect the yellow end back to the BASE STATION.

Wait for a few moments before the computer recognizes DesXcape 150DM and shows the Next button.

Click **Next** to continue.

2 Copying Software to Your Smart Display

To support the selected language on DesXcape 150DM, your computer will now start copying software to DesXcape 150DM. When the soft-



ware copying process is complete, you will see the following screen on your computer and your DesXcape 150DM will program itself automatically and restart.

Click **Next** to continue when it becomes available.

Step 8: Smart Display Setup Wizard

Click **Next** to continue.

• Click **Manual** only if you are an advanced user with special needs

Using my DesXcape 150DM with various network configurations

Scenario 1.

Using DesXcape 150DM to access a single computer running the Windows XP Professional operating system:

- Select **Next** at step 8
- At step 9, select **Next** directly. Make sure the box *Use the wireless network hardware I had prior to purchasing my Smart Display* is **UNCHECKED**. Your DesXcape 150DM will form a direct wireless link with the Philips wireless network adaptor on your computer without changing your existing network

Scenario 2.

Using DesXcape 150DM to access two or more computers running the Windows XP Professional operating system on your home network **with no wireless network in place**:

- You must initially have at least one wireless network connecting the computers you want DesXcape 150DM to access.
- DesXcape 150DM supports most home wireless network environments based on 802.11b (WiFi) standard. Therefore, you need to decide on a home wireless network environment and implement prior to setting up your DesXcape 150DM to access your home network.

Scenario 3.

Using DesXcape 150DM to access two or more computers running the Windows XP Professional operating system on your home network **with an Access Point between the computers you want to access through DesXcape 150DM:**

- Start with the first computer
- Select Manual in Step 8
- Fill in your home wireless network environment settings on the following page:

A You need to fill in the SSID and Computer Name of the computer you are currently working on to gain access through DesXcape 150DM).

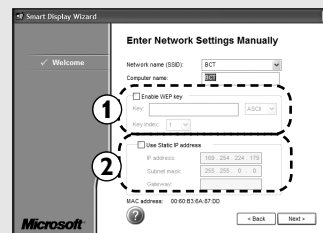
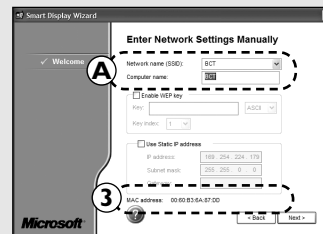
- 1 If the WEP function of your wireless network is not disabled, you need to fill in your WEP key.
- 2 If your wireless network does not support the DHCP function, you may need to manually assign an IP address for your DesXcape 150DM
- 3 If your wireless network uses MAC address filtering, you may need to add the MAC address of your DesXcape 150DM.

B Please refer to Microsoft Help and Support Center and your wireless network devices' manuals to learn how to obtain required information from and add new entries to your existing home wireless network.

- Finish the entire setup process and repeat this same process for each computer with which you want DesXcape 150DM to connect.
- In this scenario, the wireless module of your DesXcape 150DM will work in the *Infrastructure mode*.

Scenario 4.

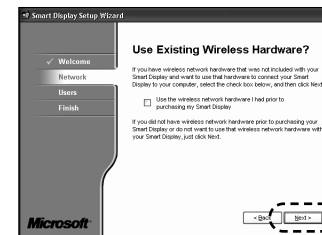
Using DesXcape 150DM to access two or more computers running Windows XP Professional operating system on your home network **without an Access Point – using only wireless network adaptors between the computers you want DesXcape 150DM to access:**



- Start with the first computer
- Select Next in Step 8
- At step 9, make sure the box *Use the wireless network hardware I had prior to purchasing my Smart Display* is **CHECKED**. Then select *Next*.
- Confirm the wireless network your computers are connected to and click *Next*.
- Finish the entire setup process. Repeat this same process for each computer with which you want DesXcape 150DM to connect.



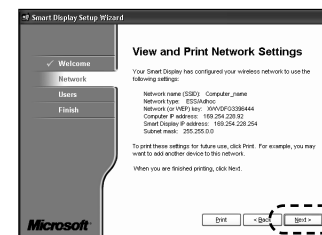
In this scenario, the wireless module of your DesXcape 150DM will work in the *Ad Hoc mode*.

**Step 9: Use Existing Wireless Hardware?**

DesXcape 150DM comes with a wireless network adaptor for the computer.

Click **Next** to continue

*If you have a local wireless network already set up, you can use that network by selecting the **Use the wireless network hardware I had prior to purchasing my Smart Display** check box. With this option, you will skip Step 10.*

**Step 10: View and Print Network Settings**

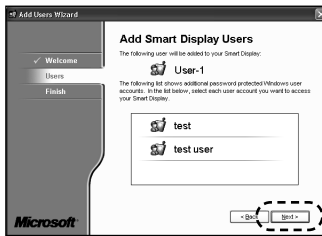
When you have printed this page, click **Next** to continue.

Note: None of the information on the **View and Print Network Settings** page is saved on your computer. Since you may need this information – especially the *Network (or WEP) key* later, it is a good idea to print this wizard page for future reference.

Step 11: Welcome to the Add Users Wizard

Each DesXcape 150DM user must have a unique user account on the host computer and a unique connection configuration, known as a user connection, on the DesXcape 150DM. Each DesXcape 150DM user logs on to the computer by selecting his or her user name from the DesXcape 150DM Dashboard.

Click **Next** to continue with the wizard.



Step 12 Add Smart Display Users

The wizard lists the users who are eligible to be added. Select required users and click **Next**.

Step 13: Completing the Add Users Wizard

Click **Finish**.

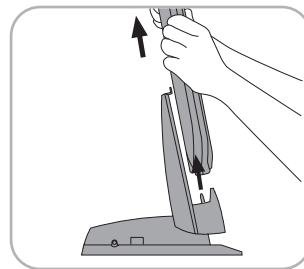
Now you have completed the entire DesXcape 150DM setup process and will be returned to your Windows desktop. Now let's start unleashing the power of DesXcape 150DM by learning through First-timer Tutorial!

First-timer Tutorial

Detach from Base Station

To detach your DesXcape 150DM from its base station, please refer to the illustration.

Note: In order to conserve battery power, your DesXcape 150DM may turn off the system after certain period of inactivity. When this happens, the power switch remains in the **ON** position. To turn on your DesXcape 150DM under such circumstances, slide the power switch to the **OFF** position and then back to **ON** position.



On-Screen Tutorial

Screen Alignment

When you detach DesXcape 150DM from its base station after setting it up on your computer, your DesXcape 150DM will ask you to tap selected areas on the screen with the stylus. This process helps DesXcape learn your stylus tap 'signature.' Please follow the screen instructions to complete this process.

To realign the touch sensitive screen on your DesXcape 150DM in the future, you may tap Settings on the Dashboard (See the Dashboard section below) and follow the instructions in the Stylus section.

Input Panel

The **Input Panel** is an on-screen keyboard and writing pad that simplifies the task of entering text using a stylus. To display the Input Panel, press the **Input Panel** hardware button on your DesXcape 150DM.

To hide it, press the button again. This is a good time to tap on the different functions on the toolbar to see how they work.

More information about how to use and configure the **Input Panel** will be provided during the interactive Smart Display Tutorial program and be found in **Microsoft Help and Support** on your computer. Open the **Start menu, Help and Support, Hardware**, and then **Windows Powered Smart Display**. Look for information in the **Smart Display Input Panel**.

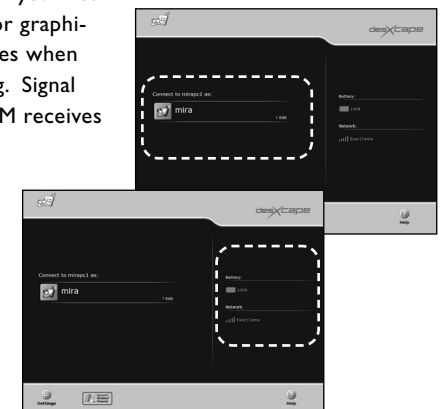
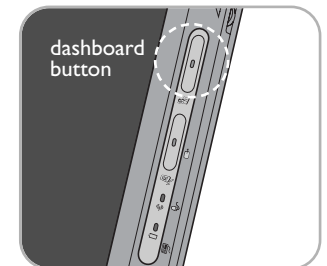
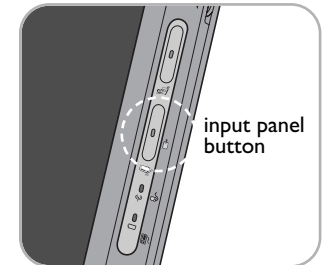
Dashboard

The Dashboard is the screen you see on your DesXcape 150DM when you detach it from the base station before connecting it to your computer. You can access the Dashboard at any time by pressing the Dashboard hardware button on your DesXcape 150DM.

The left column of the Dashboard lists the connections that you have created and allows you to connect to the computer with the same user name by simply selecting the connection name.

The right column shows your battery charge level and your network signal strength level. The battery level indicator graphically illustrates the battery charge level and changes when the battery is plugged into AC power and charging. Signal strength indicates how well your DesXcape 150DM receives the wireless signals from your computer.

More information about how to use and configure the settings from Dashboard can be found from **Microsoft Help and Support** on your computer. Open the **Start menu, Help and Support, Hardware**, and then **Windows Powered Smart Display**. Look for information under **Smart Display** settings.

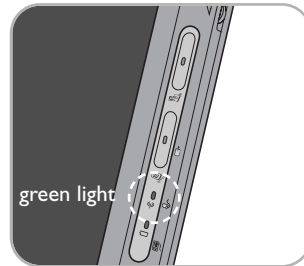


Connect to your computer

To connect to your computer, follow these steps:

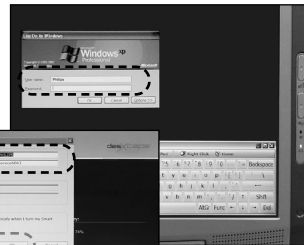
- 1 Turn on your DesXcape 150DM and detach it from the base station.

After turning on your DesXcape 150DM, you may have to wait a few seconds for it to detect your network. From the Dashboard, be sure the network signal strength is good. When the signal strength is good, the network indicator light is green.



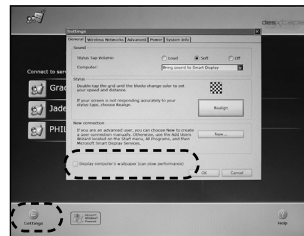
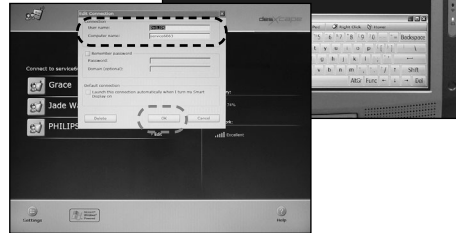
- 2 Click on the user name with which you want to connect.

A Logon dialog box appears with the user name listed. This dialog box does not appear if you have chosen to have your DesXcape 150DM remember the password for your user connection in the Dashboard settings. To have your DesXcape 150DM remember the password, tap the edit box **Edit** next to the selected user name in the Dashboard, check the box for **Remember password**, enter the password for the selected user name and click **OK**. For more information about Dashboard settings, open the Start menu and select **Help and Support, Hardware, and Windows Powered Smart Display**. Look for information under Smart Display settings.



- 3 If the Logon dialog box appears, push the Input Panel button to display the on-screen keyboard, enter the password, and then choose OK. The Windows desktop of your computer appears.

When you connect your DesXcape 150DM to your computer, you will see your computer's desktop with your icons. By default, you will not see your desktop wallpaper; instead, your desktop will be a solid color. However, you can choose to display your desktop wallpaper by tapping **Settings** on Dashboard and check the box for **Display computer's wallpaper**. Note: Wallpaper display can slow performance.



Disconnect from your computer

When you have finished using your DesXcape 150DM, you have two options for ending the communication link between your DesXcape 150DM and your computer: disconnect or log off.

Disconnect option: If you choose to disconnect, you will still be logged in to your computer, and your applications will continue to run, but your computer will no longer be visible through your DesXcape 150DM. When you next log on either from your DesXcape 150DM or while sitting at your computer, the desktop will show that all active applications remain active.

Log off option: If you choose to log off from your DesXcape 150DM, your applications will shut down, your desktop settings will be saved, and the connection between your DesXcape 150DM and your computer will close. The next time you log on, either from your DesXcape 150DM or computer, you will need to launch any applications you want to use.

To disconnect from your computer, you can use either of the following procedures.

- 1 Choose **Start** and then choose **Disconnect**. A message appears asking you to confirm that you want to disconnect.

- 2 Choose **Disconnect**. To stay connected, choose **Cancel**.

— or —

- 1 Press the hardware button for the **Dashboard**. A message appears warning you that you are about to be disconnected.

- 2 Choose **OK**.

To log off from your computer:

- 1 Choose **Start**, and then choose **Log Off**.

A message appears asking you to confirm that you want to log off.

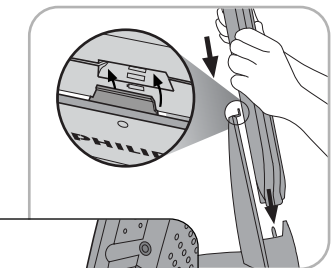
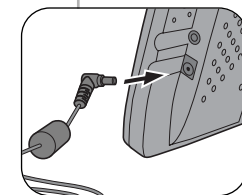
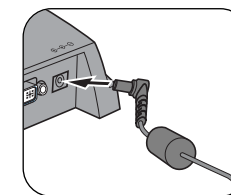
- 2 Choose **Log Off** to log off and disconnect from your computer. To remain logged-on and to stay connected, choose **Cancel**.



Place back into base station

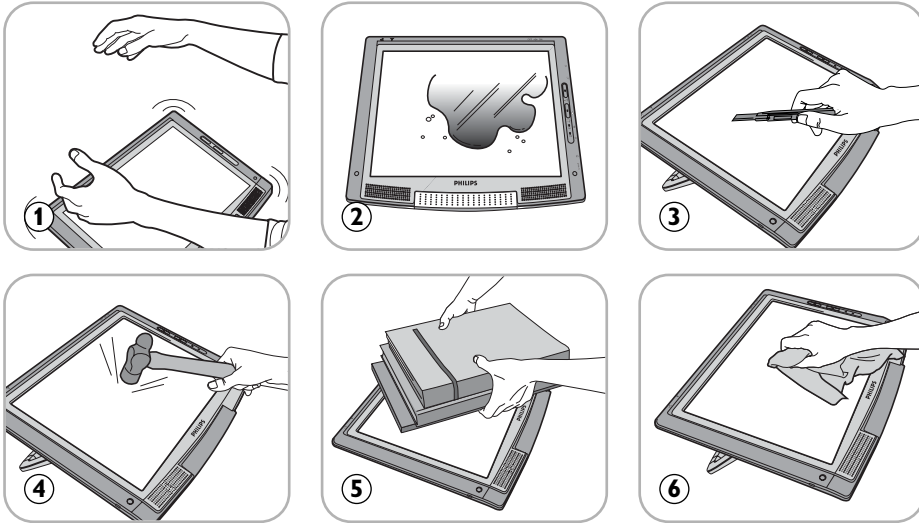
Please refer to the illustration to place your DesXcape 150DM to the base station.

DesXcape 150DM's battery is charged when it is placed in the base station. Usually it takes less than one hour and half to charge an empty battery to 80% of its full capacity. To charge DesXcape away from its base station, connect the AC power adaptor directly to your DesXcape 150DM.



Product Care

Here are the care notes you should know about using DesXcape 150DM. Please note that damage to DesXcape 150DM due to misuse/accidents will not be covered by your product warranty.



1 Do not drop:

DesXcape 150DM is a complicated electronic device and cannot stand the shock from dropping.

2 Do not expose to moisture:

DesXcape 150DM is neither moisture proof nor moisture resistant. Exposing any part of DesXcape 150DM to moisture or spilling liquids of any kind onto it will very likely damage your DesXcape 150DM.

3 Do not scratch:

The touch screen of DesXcape 150DM may be damaged by hardware with sharp edges. Please only use the stylus that came with your DesXcape 150DM touch screen.

4 Do not hit:

The LCD panel of DesXcape is made of glass and therefore is sensitive to abnormal forces.


5 Place no heavy objects on the screen:

6 Screen cleaning:

please use only dry soft cloth to sweep your screen.

7 Temperature & Humidity limitations:

 Operating temperature: 5° ~ 35° (Celsius)

 Humidity: 20% ~ 80%

DesXcape 150DM software update

From time to time, new software updates will be available from the Philips website. Registered users will be informed of software updates through proactive email notifications. To register your DesXcape 150DM online go to <http://www.philips.com/desxcape/register>.

The software update notification email will explain how to update your DesXcape 150DM and maintain optimal performance.

The DesXcape Experience

Online Registration

DesXcape comes with great online customer care!

- 1 System update notice:** From time to time, Philips will create performance-enhancing upgrades that make DesXcape 150DM operations even smoother and augment compatibility. We'll let registered users know about upgrades through proactive e-mail messages.
- 2 Online Support :** We'll provide for device driver downloads, applications, user reference materials as well as answers to questions asked by DesXcape 150DM users at a convenient online location.
- 3 Club Philips and other activities:** You will have the opportunity to join exclusive user clubs, participate in special programs or get extra benefits!

But you have to register to get the goodies! If you haven't already done so, please register online now:

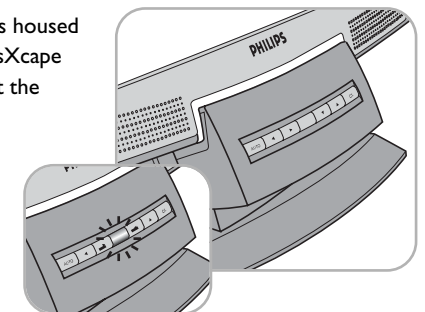
<http://www.philips.com/desxcape/register>

Philips is committed to protect your personal privacy. Philips privacy policy is available at the bottom of all Philips websites.

Base station function

The base station works only when DesXcape 150DM is housed in it. The base station turns off automatically when DesXcape 150DM is powered off or detached. A light indicator at the front shows whether or not the base station is active.

It is highly recommended that you connect to the base station only devices that you do not plan to use while DesXcape 150DM is away from its base station. Use the base station to connect devices like keyboards, mouse, speakers, and microphones that are



only used when DesXcape 150DM is housed in its base station. If you plan to use a device while DesXcape 150DM is away from the base station in its mobile mode, connect it directly to your computer or to a USB hub.

Important: Do not connect the wireless network adaptor to the base station. If the wireless network adaptor is connected to the base station, it **cannot** communicate with your DesXcape 150DM while it is away.

Your base station is tilt-adjustable. Adjust it according to your preferred viewing angle when DesXcape 150DM is on its base station.

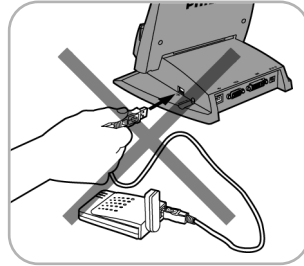
Base station interfaces: (PLEASE REFER TO THE PAGE 6 FOR DETAIL.)

- 1 **OSD buttons:** Activate an On-Screen Display menu for adjusting your display performance when DesXcape 150DM is housed in its base station.
- 2 **Audio in:** Receives sound from your computer. When connected to your computer with an audio cable, DesXcape 150DM speakers on become your computer speakers when DesXcape 150DM is housed in its base station.
Important: This plug is only for use with an audio cable connecting the base station and your computer. **It is not suitable for use with a microphone.**
- 3 **Audio out:** Output the sound coming from your computer to external speakers or a headset.
- 4 **VGA/DVI-D:** Receives video image signals from your computer.
- 5 **USB (type A):** Supports all USB devices when DesXcape 150DM is on the base station as a desktop monitor. **Remember: Base station USB ports are active only when DesXcape 150DM is housed in its base station.**
- 6 **USB (type B):** Transfers non-video signals between the base station and your computer.
- 7 **DC in:** Provides power to charge the DesXcape 150DM when it is housed in its base station.
- 8 **DesXcape 150DM connector:** Transmits signals between the base station and DesXcape 150DM.
- 9 **DesXcape 150DM latch:** Secures DesXcape 150DM when it housed in the base station.

📌 DesXcape 150DM as Wireless Monitor

VGA Out from DesXcape 150DM


There is a mini-VGA output port at the right side of your DesXcape 150DM. (See illustration on page 5.) With the included DesXcape 150DM mini-VGA cable, this port can output the display signals of your DesXcape 150DM directly to any display device you wish to use — another monitor or even a projector!



Automatic wireless reconnection

When you move out of the wireless operating range of your DesXcape 150DM, it loses the ability to establish a connection to your computer. If you move out of the wireless operating range when you have already established a connection to your computer, the system will automatically try to re-establish the connection to keep your experience uninterrupted. DesXcape 150DM will return to Dashboard after failing to re-establish the previous connection several times.

Battery and Power status

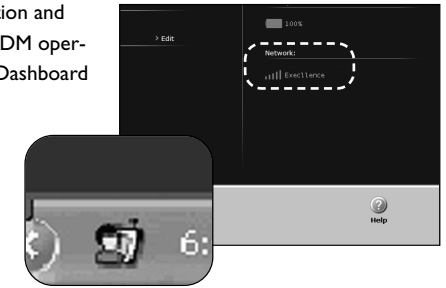
When you detach DesXcape 150DM from the base station and do not have AC adaptor connected to it, DesXcape 150DM operates on battery power. Battery status is shown on the Dashboard when you are not connected to a computer or on the Smart Display Notification icon  when you are connected to a computer.

When your DesXcape 150DM is on and battery level is low, the battery indicator will turn into yellow and start blinking. If this occurs, please recharge your DesXcape 150DM immediately.

Your DesXcape 150DM continues to consume some power when its power is off. For this reason, we strongly recommend that you place your DesXcape 150DM back in base station for recharge when not in use or recharge it with the direct AC power adaptor at regular intervals.

If DesXcape 150DM's battery is completely depleted, all the setting on your DesXcape 150DM might be lost even after you recharge the battery. In this case, please refer to the **Quick Troubleshooting** section in this manual.

For additional information regarding battery and power status, go to **Microsoft Help and Support Center**. Click **Start menu, Help and Support, Hardware**, and look under **Windows Powered Smart Display** in **Microsoft Help and Support Center**.



DesXcape 150DM as Desktop Monitor

Analog and Digital video input

When you have different video signal coming from the VGA port and the DVI-D port, the signal from DVI-D port is automatically chosen as the preferred signal for video display. You may choose to display the video signal from VGA port by using **INPUT SELECTION** from the OSD menu. For more information about the OSD menu, please refer to OSD functions in the **Optimize and Customize** chapter.

Working with an optional wireless keyboard

Setting up Wireless Keyboard

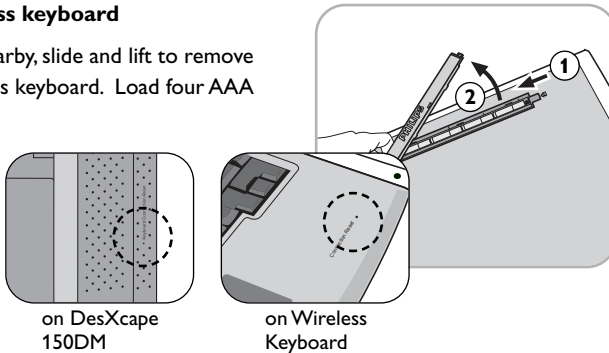
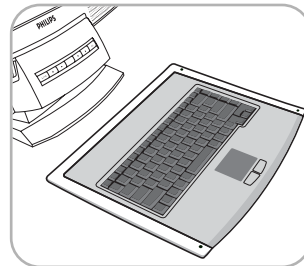
The optional Philips DesXcape 150DM wireless keyboard gives you the benefits of an additional input tool that complements DesXcape 150DM's built in on screen keyboard. The Wireless Keyboard uses a built-in radio frequency module to communicate directly to your DesXcape 150DM. In order to complement – not interfere with – your DesXcape experience, keyboard frequency is different than the frequency employed by DesXcape 150DM to communicate the host computer.

Installing the optional wireless keyboard

With your DesXcape 150DM nearby, slide and lift to remove the battery cover of your wireless keyboard. Load four AAA size batteries into the keyboard.

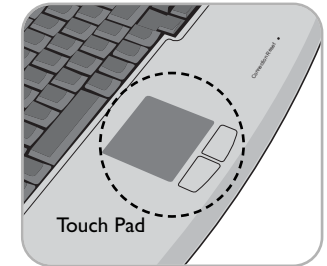
Replace the cover over the batteries and slide the cover back into place. With batteries loaded, the keyboard automatically searches for your DesXcape 150DM and, in a few seconds, configures itself to work with DesXcape 150DM.

On rare occasions when the automatic configuration process doesn't connect, restart the search process by pressing the Connection Reset button on the front panel of the keyboard and then Keyboard Connection Reset button on the left-hand rear of your DesXcape 150DM. Both your DesXcape 150DM and the keyboard will try to find each other and automatically configure themselves.



Using Wireless Keyboard

The Wireless Keyboard functions exactly like a normal keyboard. A touch pad below the keypad allows you to draw lines or point to items on the Windows desktop. The left touch pad button functions like left clicking a mouse and the right touch pad button functions like right clicking a mouse.



Other DesXcape 150DM functions

Here is a functional list of components and interfaces on the DesXcape 150DM:

(PLEASE REFER TO PAGE 5 FOR DETAILS)

- 1 **Brightness adjusting wheel:** Scrolls up or down to adjust LCD screen brightness.
- 2 **Volume adjusting wheel:** Scrolls up or down to adjust DesXcape 150DM speaker volume.
- 3 **DC-in:** Connects to the plug from AC power adaptor for directly charging your DesXcape 150DM when it is not housed in its base station.
- 4 **Speaker:** Outputs DesXcape 150DM sound.
- 5 **Headphone jack:** Outputs DesXcape 150DM sound to your headphones.
- 6 **USB:** Supports additional USB keyboard or mouse devices.
- 7 **Kensington lock slot:** Supports Kensington type lock

Optimize and Customize

DesXcape 150DM as Wireless Monitor

Optimize wireless signal strength

Here is a quick summary of ways you can optimize your wireless signal strength:

- Keep as few things as possible between your DesXcape 150DM and the wireless network adaptor. Large metal objects are especially prone to creating signal degradation.
- Avoid working in the vicinity of interference creating devices such as 2.4GHz cordless phones, microwave ovens and Bluetooth devices.

Using your DesXcape 150M antenna

- Pull up the DesXcape 150DM antenna from its housing and adjust the antenna direction for best signal quality.

Optimize wireless display performance

When it is on the base station, DesXcape 150DM supports all PC applications. When it is detached from the base station, most applications run flawlessly. However, at times there are few exceptions.

Sometimes Internet streaming audio and video may not run smoothly on DesXcape 150DM in its wireless mode. This is most likely due to poor wireless signal quality, large video screen size, or too

many applications running at the same time. Please take the steps listed above in **Optimize wireless signal strength** to improve wireless signal quality, adjust the video screen size and close unnecessary applications to enhance your wireless experience.

Note: Due to wireless bandwidth limitations and special hardware requirements, DesXcape 150DM does not support full screen motion pictures or 3D games.

Power-saving settings on your DesXcape 150DM

Set your DesXcape 150DM power-saving functions by clicking the Dashboard's **Settings** button on Dashboard and choosing **Power**.

You may configure different settings here for your DesXcape 150DM depending whether it is running on battery power or AC power.

Sound settings on your DesXcape 150DM

Configure your DesXcape 150DM sound settings by clicking the Dashboard's **Settings** button on Dashboard and looking under the tab **General**.

You may turn your DesXcape 150DM into a remote controller and your PC into a jukebox to play music by choosing to leave sound on computer, or change your stylus tap volume here.

Show desktop Wallpaper

By default, you will not see your desktop wallpaper when you connect your DesXcape 150DM to your computer; instead, your desktop will be a solid color.

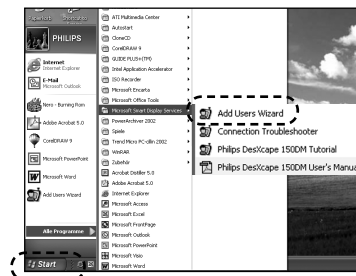
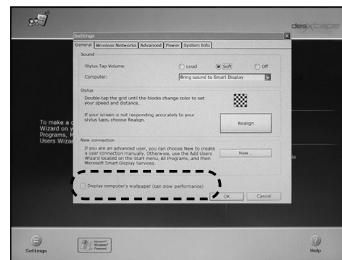
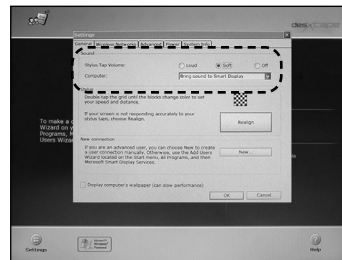
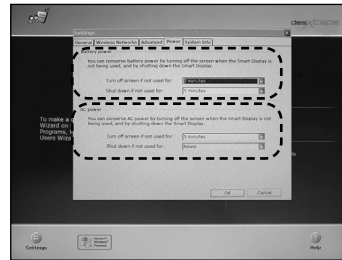
You can choose to display your desktop wallpaper by tapping Settings on Dashboard, look under the tab General, and check the box for Display computer's wallpaper.

Manage users on your DesXcape 150DM

To add new DesXcape 150DM users, launch the **Add User Wizard** on your computer.

(Click **Start menu, All Programs, Microsoft Smart Display Services** and then **Add User Wizard**.)

To remove an existing DesXcape 150DM user, tap Edit button of the user account on Dashboard and tap delete.



Reconfigure the DesXcape 150DM wireless network

You can reconfigure your DesXcape 150DM wireless network settings to make it work again with a changed home wireless network environment.

Here's how:

- 1 At the Product Maintenance page, select **Add Users**. The setup program will reconfigure your wireless network and add new users. If you want to reinstall all the programs and drivers before the setup program reconfigures your wireless network and adds new users, select **Repair**.

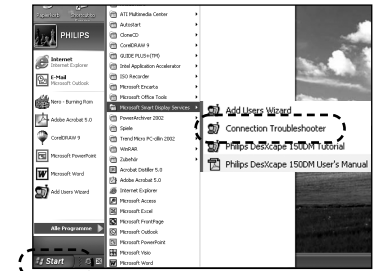
— Or —

- 2 Go to **Microsoft Help and Support** on your computer to find information about DesXcape manual setup. Click **Start menu, Help and Support, Hardware** and look under **Windows Powered Smart Display**. Alternatively, search for **Smart Display** in the **Microsoft Help and Support Center**.

Access to multiple computers

To use one DesXcape 150DM to access more than one computer, you need to have all the computers running Windows XP professional edition with Service Pack 1 with the DesXcape 150DM Setup CD installed. Then you can set your DesXcape 150DM and all the computers you plan to logon to work on the same wireless network. After that, you can use the Add User Wizard on each computer to create user connections to each computer or manually create user connections.

For more information about setting up your DesXcape wireless network manually and creating user connections manually, please refer to "What wireless network is best for my DesXcape 150DM" section on page 11. Go to **Microsoft Help and Support** on your computer. Click **Start menu, Help and Support, Hardware** and look under **Windows Powered Smart Display**. Alternatively, search for **Smart Display** in the **Microsoft Help and Support Center**.



📖 DesXcape 150DM as Desktop Monitor

OSD functions

DesXcape 150DM has an On-Screen-Display (OSD) function that enables users to adjust the display performance of DesXcape 150DM when it is on the base station.

The Main page appears when you push the OSD button OK.

Here is the description of the adjustment items:

1 LANGUAGE

Sets the OSD to display in one of six languages English, Español, Français, Deutsch, Italiano, Japanese.

2 CONTRAST

Adjusts screen contrast.

3 ADJUST POSITION

Adjusts monitor screen horizontal or vertical viewing area.

4 VIDEO NOISE

Adjusts display clarity by changing Phase and Clock values.

5 ADJUST COLOR

Four different color temperatures are available.

- 9300K
- 6500K
- ORIGINAL PANEL COLOR
- USER PRESET (Setting the color by user's preference.)

6 OSD SETTINGS

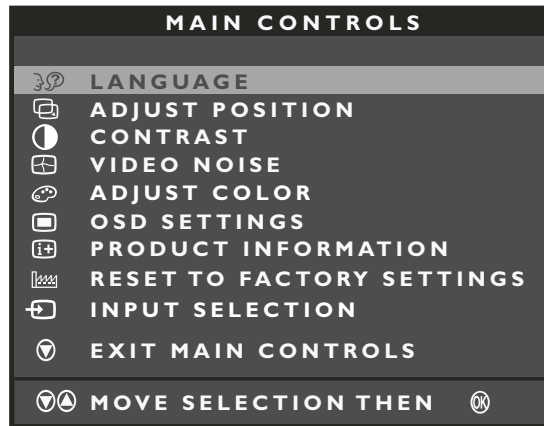
Sets the location where the OSD screen appears.

7 PRODUCT INFORMATION

Displays product information including serial number, resolution and video input status.

8 INPUT SELECTION

Selects Analog (VGA port) or Digital (DVI-D port) video input signal.

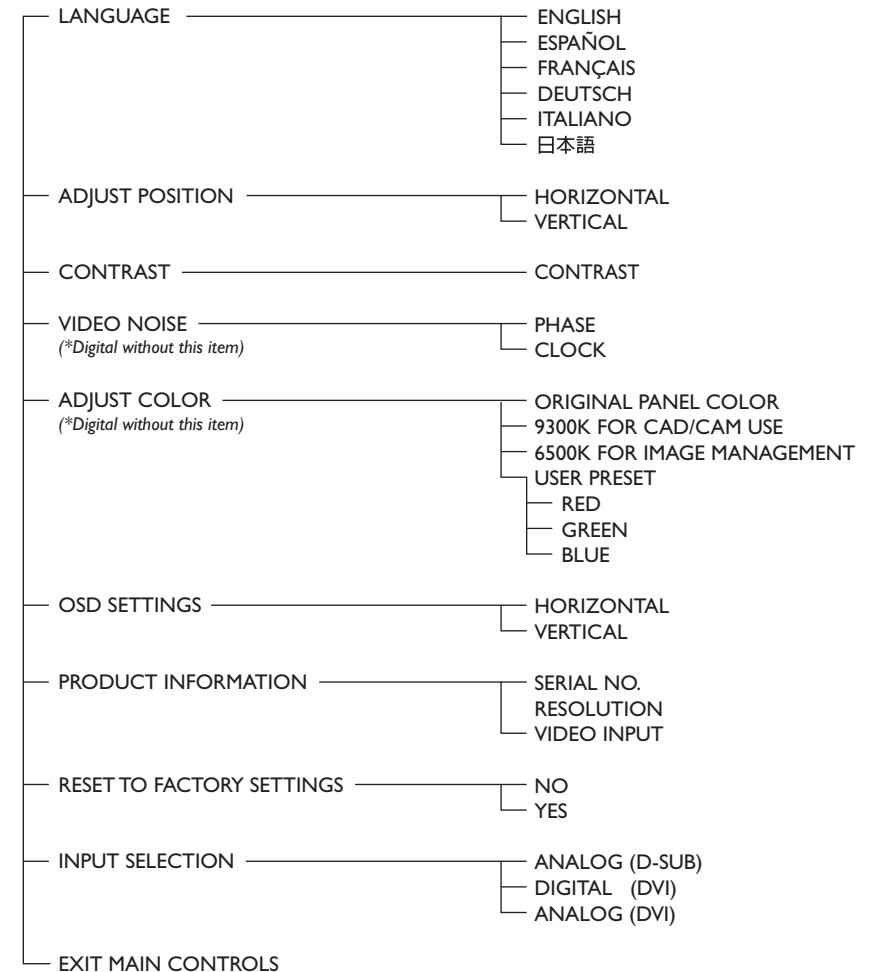


Here is the whole OSD function structure:

OSD Tree (For Analog /Digital Input)

First Level

Second Level



* Specifications are subject to change without prior notice.

Glossary

802.11b

An industry standard that describes a popular wireless network configuration. DesXcape 150DM is designed to be used on 802.11b networks.

Access point

See [wireless access point](#).

Ad hoc network

A computer-to-computer connection between two devices that have wireless network adapters installed. Your DesXcape 150DM can establish an ad hoc connection with any computer that has a wireless network adapter and Smart Display Services installed. This contrasts with an infrastructure network.

Base station

A stand that holds a DesXcape 150DM and connects it to AC power and, through a VGA cable and a USB cable, to a computer.

Computer name (for network setting)

A name that identifies a computer on a network. If the network has a name service such as DNS or WINS turned on, the name service equates the user-friendly computer name with the computer-friendly IP address.

Connection

See [user connection](#).

Dashboard

The main screen of your DesXcape 150DM when it is not connected to your computer. You can access the Dashboard at any time by pressing the Dashboard hardware button on your DesXcape150DM.

Docking station

See [base station](#).

Handwriting recognition

The ability to interpret handwritten text and convert it into computer-readable text. Handwriting recognition programs allow you to enter text using

a pen-shaped stylus or other handwriting input device, rather than a keyboard.

Help and Support Center

A central location within Windows XP for Help topics, tutorials, troubleshooting and other support services.

Hover mode

A stylus mode that allows you to use the stylus to move the pointer over an object without choosing it. Hover mode allows users to use Flash controls and rollover graphics on Web pages.

Infrastructure network

A computer network that uses a wireless access point. This is in contrast to an ad hoc network, which does not use a wireless access point.

Input Panel

Allows a user with a touch-screen to select between the following input modes: on-screen keyboard, writing pad, quick-key keypad, right-click mode, hover mode, and option settings. You can access the Input Panel at any time by pressing the Input Panel hardware button on your DesXcape 150DM.

IP address

The Internet Protocol (IP) method of identifying computers on a network. An IP address has numbers separated by periods (.), for example, 192.168.1.47

Local area network (LAN)

A communications network connecting a group of computers, printers, and other devices located within a relatively limited area, for example, inside a building. A LAN allows any connected device to interact with any other on the network and share resources, such as printers and fax machines.

Microsoft Smart Display Services

The DesXcape 150DM related programs that reside on your computer. Smart Display Services enable your computer to talk to your DesXcape 150DM.

Network

See [wireless network](#).

Network adapter

See [wireless network adapter](#).

Network indicator

A light on the front of your DesXcape 150DM that indicates the strength of the network signal and restore mode. When the signal strength is good, the light is green. When the signal strength is weak, the light is yellow. When there is no signal, the light is off. When the light blinks, the DesXcape 150DM is in the restore mode.

Network name

See [service set identifier \(SSID\)](#).

On-screen keyboard

An Input Panel option providing a resizable software keyboard that allows DesXcape 150DM users to type using a stylus.

Remote desktop connection

A set of services available in Windows XP Professional that enable you to access a Windows session that is running on one computer when you are at another computer or device, such as a DesXcape 150DM. This is the technology that makes the DesXcape 150DM possible. For example, you can connect to your home office computer from your DesXcape 150DM in the family room and have access to all your applications files, and Internet resources as though you were in front of your computer.

Remote computer

A computer you can access with your DesXcape 150DM; a computer that is not physically connected to the DesXcape 150DM and which may be in another room.

Remote desktop users

A group of Windows user accounts that Windows creates when a Remote Desktop Connection is

enabled. All DesXcape 150DM users are added to this group.

Right-click mode

An Input Panel option that enables users to use a stylus to perform the same function as they would with the right button of a mouse.

Router

See [wireless router](#).

Service pack (SP)

A periodic update that enhances one version of a product. Windows XP updates are usually released as service packs.

Service set identifier (SSID)

A name given to a wireless network. Most wireless networks can broadcast their SSID, allowing wireless devices to detect the network.

Signal strength

Measures the intensity of the wireless network radio signal at the DesXcape 150DM. It does not indicate the DesXcape 150DM is connected to the network.

Smart Display

See [Windows Powered Smart Display](#).

Smart Display Settings

A tabbed dialog box, available from the Dashboard that allows you to change DesXcape settings.

Smart Display Services

See [Microsoft Smart Display Services](#).

Stylus

A pen-shaped tool that replaces the mouse and keyboard as the main input mechanism for a DesXcape 150DM in conjunction with a touch screen. With the stylus, you can type on the on-screen keyboard, write on the writing pad, point, and tap. Tapping with a stylus is equivalent to clicking with a mouse.

See also [on-screen keyboard](#) and [writing pad](#).

Transceiver

A device that can both transmit and receive signals. On local area networks (LANs), a transceiver is the device that connects a computer to the network and converts signals to and from parallel and serial form.

Universal serial bus (USB)

A physical cable system for connecting computer equipment that supports Plug and Play installation. Using USB, you can connect and disconnect devices without shutting down or restarting your computer. You can use a single USB port to connect as many as 127 peripheral devices, including speakers, telephones, CD-ROM drives, joysticks, tape drives, keyboards, scanners, and cameras. A USB port is usually located on the back of your computer near the serial port or parallel port.

USB cable

See [universal serial bus \(USB\)](#).

USB controller

The chip on the motherboard of your computer that enables USB devices, such as a DesXcape 150DM, to communicate with the operating system of the computer.

User account (for computer)

An account on a computer that stores the Windows user name, password and other information for a computer user.

User connection

A communication link between your computer and your DesXcape 150DM. You use a connection to gain access to the resources of your computer from your DesXcape 150DM. The connections that are configured on your DesXcape 150DM appear in the left column of the Dashboard.

WEP

See [wired equivalent privacy \(WEP\)](#).

WEP key

A secret word or phrase that is used to encrypt data sent over a wireless network. It is essential to Wired Equivalent Privacy (WEP) security. When WEP security is enabled, every computer or device on the network must use the key to access network services.

Wide area network (WAN)

A communications network connecting geographically separated computers, printers, and other devices. A WAN allows any connected device to interact with any other on the network. The Internet is an example of a WAN.

Windows Powered Smart Display

A digital device powered by Microsoft Windows CE for Smart Displays that acts as a wireless computer terminal. It allows a computer user to wirelessly connect to a computer, run applications, read and respond to e-mail, and browse the Internet from any room in the house. DesXcape 150DM is classified as a Windows Powered Smart Display.

Wired equivalent privacy (WEP)

A security mechanism for wireless networks. WEP security requires every computer or device on the network to use the secret encryption key to access network services.

Wireless access point

A hardware device that wirelessly receives and transmits network data. A typical wireless access point supports several users within a range that varies from less than 100 feet to more than 300 feet.

Wireless local area network (WLAN)

See [wireless network](#).

Wireless network

A network of computers connected by some means other than wire cables. Most wireless networks connect through radio waves. Other types of wireless networks include infrared and microwave satellite networks.

Wireless network adapter

An internal or external device that uses specially authorized radio frequencies to connect two or more computers. Data is divided into small packets and transferred by radio between your computer and radio transceiver.

See also [transceiver](#).

Wireless router

A type of wireless access point that links a wired network with a wireless network or links two wireless networks together. Wireless routers often include hardware that connects to an Internet service provider (ISP).

Writing pad

An Input Panel option that allows users to enter data by writing directly to the touch screen of a DesXcape 150DM. Your DesXcape 150DM recognizes the hand written words and converts them to text.

You can find answers to the following questions here:

Before Setup

- Q1:** How do I check and configure the different properties on my computer before set up?
Q2: What if I only have one USB port available?

During Hardware Setup

- Q3:** Where is the packing list?
Q4: Where is the power switch?
Q5: Why doesn't the screen light up when I power it on?
Q6: What should I do with unused hardware components?

During Software Setup

- Q7:** What should I do with the **Welcome to the Found New Hardware Wizard**?
Q8: Nothing happens after **Connect USB Cable** page
Q9: What does **Use Existing Wireless Hardware** mean?
Q10: What does it mean to **Select Your Wireless Network**?
Q11: What should I do if I abort the setup process abnormally?

During Use

- Q12:** How to do keyboard input?
Q13: I see a **CHECK CABLE CONNECTION** screen!
Q14: My wallpaper doesn't show up!
Q15: The screen is off when the power is still on!
Q16: The screen shows a **Welcome** page when I turn it on!
Q17: I cannot logon to my computer when I turn it on!
Q18: I cannot watch the video playback from my computer!
Q19: The USB ports on the base station are not working!
Q20: The speakers are not working when DesXcape 150DM is in its base station!
Q21: My DesXcape wireless keyboard stops working!
Q22: Reconfiguring DesXcape 150DM wireless network settings!
Q23: Where can I get more information

Before Setup

- Q1:** How do I check and configure the different properties on my computer before set up?

Look up the **Getting Started (A Complete Start Guide)** chapter of this User's Manual. There are detailed explanations on how you can check and configure your computer.

- Q2:** What if I only have one USB port available on my computer?

The two unused USB ports are reserved for the USB wireless network adaptor and the base station. If you have only one USB port available, the following options (and corresponding limitations) are available:

- Use a self-powered USB hub to expand the number of available USB ports. **Or,**
- Move other USB devices to the base station. (Note: such devices will become inactive when DesXcape 150DM is not housed in the base station.) **Or,**

- Use your existing wireless network adaptor or wireless access point instead of the USB wireless network adaptor. However, this requires that you have the specialized knowledge to set up the wireless network for DesXcape 150DM manually during setup process.

During Hardware Setup

- Q3:** Where is the packing list?

A quick packing list is available on Quick Start Guide. A more complete packing list is available at the Getting Started (A Complete Start Guide) chapter of this User's Manual.

- Q4:** Where is the power switch?

The power switch is located at the upper right corner behind the screen.

- Q5:** Why doesn't the screen light up when I power it on?

There are two possible reasons: 1) You are using DesXcape 150DM on battery power and there is no power in the battery. Solution: Use your AC power adaptor and/or base station to recharge batteries. 2) The device entered the Standby mode, automatically turning the screen off. Solution: Turn the power switch off and then on again to turn on the screen.

- Q6:** What should I do with unused hardware components?

The wireless network adaptor and USB cables will be installed and used during software setup process following on screen instructions. Store the unused stylus, mini-VGA cable, and/or audio cable in a safe place for future use.

During Software Setup

- Q7:** What should I do with the **Welcome to the Found New Hardware Wizard**?

Follow the recommended approach (Install the software automatically) and finish the process before you proceed further. Please note that there may be more than one device found when you connect the USB cable from the base station to the computer. Wait for the computer to recognize each device and install appropriate drivers for each before you proceed.

- Q8:** Nothing happens after **Connect USB Cable** page!

Make sure that: 1) You have connected the USB cable correctly; 2) Your DesXcape 150DM is powered-on and placed on the base station; and 3) The computer has finished all Found New Hardware processes. Sometimes the Found New Hardware wizard is hidden behind other windows. Also, you might have to wait for a few seconds for the computer to recognize your DesXcape 150DM and locate the drivers for it. Another possibility: DesXcape 150DM related hardware devices are not properly installed. To check installation, right-click on My Computer. Choose Properties, Hardware and then Device Manager. To fix problem devices, right-click on devices with an exclamation mark and choose update driver. Follow all screen prompts to complete the process.

Q9: What does **Use Existing Wireless Hardware** mean?

DesXcape 150DM is designed to communicate with your computer through the included wireless network adaptor. However, some advanced users may wish to employ their existing wireless network adaptors or wireless access points to communicate with DesXcape 150DM.

Q10: What does it mean to **Select Your Wireless Network**?

Advanced users who choose to employ their existing wireless hardware must select a wireless network for use with the DesXcape 150DM. If you are a general user, click Back, uncheck the box for Use Existing Wireless Hardware, make sure the included wireless network adaptor is connected to your computer and installed. Then click Next to proceed.

Q11: What should I do if I abort the setup process abnormally?

You may continue by restarting the Software Setup process later

During Use**Q12:** How to do keyboard input?

Push the Input Panel button on the right hand side of your DesXcape 150DM and an on-screen keyboard will show up. Or, use the optional Philips DesXcape wireless keyboard.

Q13: I see a **CHECK CABLE CONNECTION** screen!

DesXcape 150DM switches to the desktop monitor mode and automatically checks the video connection from your computer when it is placed on the base station. This message lets you know that you do not have a video cable properly connected between your computer and the base station

Q14: My wallpaper doesn't show up!

The default setting of DesXcape 150DM is not set to show wallpaper. You may change it by clicking on Settings from the Dashboard and checking the appropriate box.

Q15: The screen is off, but the power is still on!

There are two possible reasons: 1) You are using DesXcape 150DM on battery power and there is no power in the battery. Solution: Use your AC power adaptor and/or base station to recharge batteries. 2) The device entered the Standby mode, automatically turning the screen off. Solution: Turn the power switch off and then on again to turn on the screen.

Q16: The screen shows a Welcome page when I turn it on!

This means your DesXcape 150DM has reverted to factory settings. Your previous DesXcape 150DM settings are gone. You need to reconfigure the wireless network between your computer and DesXcape 150DM and set up user connections on DesXcape 150DM. To reconfigure your wireless network, you have to place your DesXcape 150DM back in its base station. Run the Connection Troubleshooter on your computer by choosing Start menu, All Programs,

Microsoft Smart Display Services and then Connection Troubleshooter.

To set up user connections on DesXcape 150DM, place your DesXcape 150DM back in its base station. Run Add User Wizard on your computer by choosing Start menu, All Programs, Microsoft Smart Display Services and then Add User Wizard.

Usually, DesXcape 150DM reverts to factory setting because of a lack of battery power. Even in power-off status, DesXcape 150DM still consumes a little power to maintain the settings and to keep the system ready to power on instantly. Therefore, it is important that you recharge your DesXcape 150DM at least every other day — even when you are not using it.

Another possible reason: The Hardware Reset button of your DesXcape 150DM has been mistakenly pushed. The Reset buttons are reserved for unusual situations and should not be pushed in normal operations

Q17: I cannot logon to my computer when I turn it on!

It takes few seconds from power-on for DesXcape 150DM to initialize its hardware and connect to the network. Therefore, you might encounter difficulty to connect to your computer immediately after power-on.

Another tip: Check the Dashboard or wireless signal strength indicator to make sure you are within your computer's wireless range.

If you are within the wireless range of your computer and DesXcape 150DM has finished the power-on initialization, but you still cannot logon to your computer, check the wireless network configuration between your DesXcape 150DM and your computer. To reconfigure the wireless network, place your DesXcape 150DM back in its base station, run the Connection Troubleshooter by clicking Start menu, All Programs, Microsoft Smart Display Services and then Connection Troubleshooter. This application will automatically diagnose your wireless network and reconfigure it correctly.

If you are still having trouble connecting DesXcape 150DM to your computer, load the DesXcape 150DM Setup CD into your CD-ROM drive and repeat the Setup process. At the Product Maintenance page, select Add Users. The setup program will reconfigure your wireless network and add new users. If you want to reinstall all the programs and drivers before the setup program reconfigures your wireless network and adds new users, select Repair.

Q18: I cannot watch the video playback from my computer!

Due to wireless bandwidth limitations, DesXcape 150DM cannot properly display video playback. Try to place DesXcape 150DM back on the base station and use it as a LCD monitor for full-size motion pictures.

Q19: The USB ports on the base station are not working!

The USB ports on the base station are active only when DesXcape 150DM is housed in it and the indicator light is on. When you detach your DesXcape 150DM from the base station, the indicator light is off and base station USB ports become inactive.

Q20: The speakers are not working when DesXcape 150DM is in its base station!

Adjust your volume wheel to turn up the volume and make sure that the audio cable is properly connected. The audio cable should connect the audio out port of your computer and the audio in port of the base station.

Q21: My DesXcape wireless keyboard stops working!

Please check the battery of your wireless keyboard and also refer to "Working with an optional wireless keyboard" in The DesXcape Experience section.

Q22: Reconfiguring DesXcape 150DM wireless network settings !

Load the DesXcape 150DM Setup CD into your CD-ROM drive and run the Setup process. At the Product Maintenance page, select Add Users. The setup program will reconfigure your wireless network and add new users. If you want to reinstall all the programs and drivers before the setup program reconfigures your wireless network and adds new users, select Repair.

Q23: Where can I get more information?

You can get more information about Smart Display related topics and knowledge base materials at Philips DesXcape website (<http://www.philips.com/desxcape>) or in the Microsoft Help and Support Center. Just click the Start menu, Help and Support, Hardware and check Windows Powered Smart Display. Alternatively, click the Start menu, Help and Support and search for Smart Display.

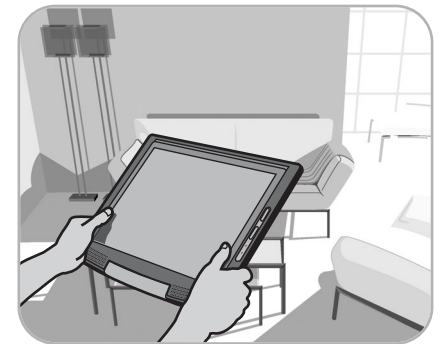
Introduction to DesXcape 150DM**What is DesXcape 150DM**

DesXcape 150DM is a display device that can be used as a monitor without any wires connecting it to the host computer. DesXcape 150DM is a Windows Powered Smart Display device, powered by Microsoft Windows CE for Smart Displays. With your DesXcape 150DM, you can browse the Internet, read and respond to e-mail or run Windows applications from the family room, the dining room, the patio or any other convenient home location.

When your DesXcape 150DM is removed from the base station and wirelessly connected to a computer, you have direct remote control of the computer. Your DesXcape 150DM displays the computer desktop just as a monitor physically connected to the computer would.

When your DesXcape 150DM is housed in the base station that links it to your home PC, DesXcape functions just like a full-featured 15-inch LCD monitor. You use it just like the way you would any other LCD monitor.

When it's physically separated from its host computer, DesXcape 150DM really shines! It uses wireless technologies to provide access to your computer anywhere in your house. It comes with a built-in wireless network module and user-friendly setup wizard that guides you step by step through the installation of necessary software and configuration. DesXcape 150DM deliver a stylish and hassle-free home PC experience anywhere in your house!

**Smart Display vs. DesXcape 150DM**

DesXcape 150DM is a Smart Display device – and much more! Like other Smart Displays, DesXcape 150DM runs Windows CE for Smart Displays and meets Smart Display hardware requirements. But DesXcape 150DM doesn't stop with the basics: Its screen size, overall dimensions, outstanding display, thoughtful features and overall high quality make it the unrivaled star among Smart Displays.

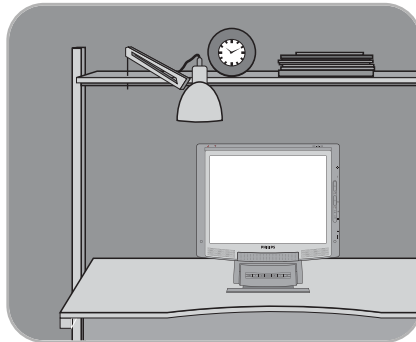
Smart Display

How DesXcape 150DM works

You may use your DesXcape 150DM as a wireless monitor for any of your computers running Windows XP professional operating system when it is detached from the base station. As a wireless monitor, DesXcape 150DM may be battery-powered (by the inside battery) or wall-powered (by connecting the AC power adaptor to DesXcape 150DM directly). The display signals, as well as sound and interactions from the touch-sensitive screen, are transmitted wirelessly between the computer and your DesXcape.



The key technologies that make DesXcape 150DM a wireless monitor include 802.11b wireless technology and Windows Smart Display technology. The 802.11b wireless technology is the basis for all the wireless transmissions between DesXcape 150DM and the computer. DesXcape 150DM has built-in a wireless network module and there is also a wireless network adaptor for your computer with the purchase of DesXcape 150DM for such wireless communications. On the other hand, Windows Smart Display technology provides all the functionalities and user-friendly interfaces for your wireless anywhere experience with DesXcape 150DM at home.



DesXcape 150DM can be used as a desktop monitor when it is on the base station with the base station connected to your computer. In this setup, the AC power adaptor connected to the base station powers DesXcape 150DM while the computer transmits display signals to DesXcape 150DM through a video cable (a VGA cable or a DVI cable). With the power and display signals, DesXcape 150DM acts exactly like a 15" LCD monitor for your computer.

When your DesXcape 150DM is placed in its base station in the stationary mode, the USB cable connecting the base station and your computer transmits data for the optional wireless keyboard, DesXcape 150DM touch sensitive screen, and base station USB ports to your computer.

Specifications

Embedded System

- CPU: Intel® Xscale Application Processor™; 400MHz
- Memory: 64MB SDRAM (on board)
- Flash ROM: 32MB

Operating System

- Microsoft® Windows CE for Smart Displays

Wireless Communications

- 802.11b wireless LAN (built in)

LCD panel

- Type TFT LCD
- Screen size 15 inch / 38.1 cm
- Pixel pitch 0.297 x 0.297mm
- LCD panel type 1024 x 768 pixels
R.G.B vertical stripe,
Anti-glare polarizer
- Effective viewing area 304.1 x 228.1mm
- Display colors 16M colors (dithering),
65,535 colors (RDP mode)

Touch panel

- 12-bit A/D converter; 100 samples per second

Video

- Dual input interface: Both Analog (D-Sub) and DVI-D are available and user selectable

Panel optical characteristics

- Contrast ratio 250 (typ.)
- Brightness 170 cd/m2
(with touch panel)
- Viewing angle Upper 30°(typ.)
(C/R >5) Lower 60°(typ.)
Left 50°(typ.)
Right 50°(typ.)

Power management

Complies with EPA Energy Star specifications

Buttons and controls

- On display Power on/off - slide switch
Brightness - VR dial
Volume - VR dial
Dashboard - launch button
Input panel - launch button
Hardware reset - push button
Software reset - push button
R/F keyboard reset - push button
- OSD OK - Tact Switch
Auto - Tact Switch
Up/Down - Tact Switch
Left / Right - Tact Switch

I/O

- On display - VGA (mini jack) out
- USB type A (2):
for keyboard and mouse
- Headphone jack
- DC-in jack
- Base station connector
- Dual integral stereo 16 bit
AC 97 2.0 compliant
speaker (2)
- On Base station - DC-in jack
- DVI-D (digital)
- 15-pin Dsub (analog)
- USB type B
- USB type A (2):
for keyboard and mouse
- Audio-in jack
- Audio-out jack

LED indicator

- On display

Power LED

- Off: power off
- Solid green: power on;
- Blinking green:
battery is charging

Wireless LAN LED

- Off: no RF signal /
no LAN connection
- Solid green: good signal level
- Solid yellow: poor signal level
- Off : Display is not on the
Base station
- Solid green: Display is on,
in the Base station
- Solid yellow: Display is on
the Base station and in
suspend mode

- On Base station

Included Accessories

- Battery (1): Internal removable smart Li-ion,
battery pack, up to 5 hours battery life
- AC-Adapter (1): AC 90V~ 265V, 47~63Hz input,
19V DC, 3.16A output, 60W
- Stylus (2)
- Base station (1)
- USB cable (2)
- VGA cable (1)
- Mini VGA cable (1)

We recommend using 1024 x 768 at 60Hz non-interlaced mode for the best picture quality.

Warranty**Who is covered?**

The original purchaser must have proof of purchase to receive warranty service. A sales receipt or other document from an authorized dealer showing that you purchased the product is considered proof of purchase.

What is covered?

[For Consumers in Europe]

Two Years Free Labor / Two Years Free Service on Parts / One Year Double Swap

- Audio cable (1)
- USB Wireless network adaptor (1)

Optional Accessories

- RF Key board (88 Keys) with Touch Pad
- Extra AC adapter
- Stylus 3-pack
- Monitor battery

Regulatory approvals

- TUV
- FCC-B, UL, CSA
- SEMKO
- CE Mark
- Energy Star
- USB Logo
- Microsoft Windows XP Pro LOGO
- Microsoft Windows CE for Smart Displays LOGO

Physical specifications

- Display dimension (WxHxD)
375 x 309 x 28.5 mm (min. height)
- Base station dimension (W*H*D)
200 x 205x227 mm
- Tilt: -3°~25°
- Display weight: 2.4 Kg
- Base station weight: 2.2 Kg
- Temperature (operating): +5°C to +35°C
- Temperature (storage): -20°C to +60°C
- Relative humidity: 20% to 80%

Warranty coverage begins the day you buy your product. For the first 12 months after purchase, the product will be repaired or replaced at the discretion of Philips Consumer Electronics. Parts, labor, and transportation are free of charge.

For the second 12 months after purchase, the product (excluding the battery) will be repaired or replaced at the discretion of Philips Consumer Electronics. Only parts and labor are free of charge.

After 24 months you pay for the replacement or repair of all parts, and for all labor and transportation charges.

The warranty for battery is 12 months. After 12 months you pay for the replacement or repair of it, and for all labor and transportation charges.

All parts, including repaired and replaced parts, are covered only for the original warranty period. When the warranty on the original product expires, the warranty on all replaced and repaired products and parts also expires.

[For Consumers in the United States]

Please visit www.philipsusa.com for warranty terms and conditions

Pls click [here](#) to get your Warranty Registration Card for consumers in the United States.

[For Consumers in Asia Pacific]**Two Year Free Labor / Two Year Free Service on Parts**

Warranty coverage begins the day you buy your product. For the first 24 months after purchase, the product will be repaired or replaced at the discretion of Philips Consumer Electronics. Parts and labor are free of charge.

After 24 months you pay for the replacement or repair of all parts, and for all labor and transportation charges.

The warranty for battery is 12 months. After 12 months you pay for the replacement or repair of it, and for all labor and transportation charges.

All parts, including repaired and replaced parts, are covered only for the original warranty period. When the warranty on the original product expires, the warranty on all replaced and repaired products and parts also expires.

What is excluded?

Your warranty does not cover:

- Labor charges for installation or setup of the product and adjustment of customer controls on the product
- Product repair and/or part replacement because of misuse, accident, unauthorized repair or other cause not within the control of Philips Consumer Electronics.*

- Reception problems caused by signal conditions outside the unit.
- A product that requires modification or adaptation to enable it to operate in any other country other than the country for which it was designed, manufactured, approved and/or authorized, or repair of products damaged by these modifications.
- Incidental or consequential damages resulting from the product.
- Here are the care notes you should know about using DesXcape 150DM. Please note that damage to DesXcape 150DM due to misuse/accidents will not be covered by your product warranty.
 - **Do not drop:** DesXcape 150DM is a complicated electronic device and cannot stand the shock from dropping.
 - **Do not expose to moisture:** DesXcape 150DM is neither moisture proof nor moisture resistant. Exposing any part of DesXcape 150DM to moisture or spilling liquids of any kind onto it will very likely damage your DesXcape 150DM.
 - **Do not scratch:** The touch screen of DesXcape 150DM may be damaged by hardware with sharp edges. Please only use the stylus that came with your DesXcape 150DM touch screen.
 - **Do not hit:** The LCD panel of DesXcape is made of glass and therefore is sensitive to abnormal forces.
 - **Place no heavy objects on the screen**
 - **Screen cleaning:** please use only dry soft cloth to sweep your screen.
 - **Temperature & Humidity limitations:**
Operating temperature: 5 ~ 35 degrees (Celsius)
Humidity: 20% ~ 80%

Where can I get more information?

Please check the next section "Additional information & customer care".

REMEMBER... Please record the model and serial numbers found on the product below.

MODEL # _____

SERIAL # _____

Additional information & customer care

This **User's Manual**, a **Quick Start Guide**, and an interactive **Smart Display Tutorial** are the materials designed to help you enjoy the best DesXcape 150DM experience.

Additional knowledge base documents and topics could be found in **Microsoft Help and Support Center** on your computer.

You may go online to Philips DesXcape website for DesXcape 150DM related resources and information: <http://www.philips.com/desxcape>

If the above information cannot help resolve your DesXcape 150DM related problems, please feel free to contact our customer care center to help you at the numbers below.

Austria	01 546 575 603
Belgium	02 275 0701
Cyprus (Greek)	800 922 56 (Toll free)
Denmark	35 25 87 61
Finland	09 2290 1908
France	03 8717 0033
Germany	0696 698 4712
Greece	00800 3122 1223
Hong Kong	852 2619 9663
Ireland	01 601 1161
Italy	02 48 27 11 53
Luxembourg	408 443 5501
Norway	22 70 82 50
Portugal	0800 831 363
Spain	09 17 45 62 46
Sweden	08 632 0016
Switzerland	02 23 10 2116
The Netherlands	053 482 9800
United Kingdom	0207 949 0069
United States	866 275 4962

Regulatory information

CE Declaration of Conformity • Energy Star Declaration • Federal Communications Commission (FCC) Notice (U.S. Only) • Commission Federale de la Communication (FCC Declaration) • North Europe Information • Ergonomie Hinweis (nur Deutschland) • Philips End-of-Life Disposal • Information for UK only

CE Declaration of Conformity

Philips Consumer Electronics declare under our responsibility that the product is in conformity with the following standards

- **EN60950:** 1992+A1+A2+A3+A4+A11 (Safety requirement of Information Technology Equipment)
- **EN55022:** 1998 Class B (Radio Disturbance requirement of Information Technology Equipment)
- **EN55024:** 1998 (Immunity requirement of Information Technology Equipment)
IEC61000-4-2: 1995/IEC61000-4-3:1995/IEC61000-4-4:1995/
IEC61000-4-5: 1995/IEC61000-4-6:1996 /IEC61000-4-8:1993/
IEC61000-4-11: 1994 (Limitation of Voltage Fluctuation and Flicker)

- **EN61000-3-2: 2000** (Limits for Harmonic Current Emission)
- **EN61000-3-3: 1995**
- **EN300328-2/EN301489-17**

following provisions of directives applicable

- **73/23/EEC** (Low Voltage Directive)
- **89/336/EEC** (EMC Directive)
- **93/68/EEC** (Amendment of EMC and Low Voltage Directive)

and is produced by a manufacturing organization on ISO9000 level.

Energy Star Declaration

PHILIPS

This monitor is equipped with a function for saving energy which supports the VESA Display Power Management Signaling (DPMS) standard. This means that the monitor must be connected to a computer which supports VESA DPMS to fulfill the requirements in the NUTEK specification 803299/94. Time settings are adjusted from the system unit by software.



As an ENERGY STAR® Partner, PHILIPS has determined that this product meets the ENERGY STAR® guidelines for energy efficiency.

We recommend you switch off the monitor when it is not in use for quite a long time.

Federal Communications Commission (FCC) Notice (U.S. Only)

This equipment has been tested and found to comply with the limits for a Class B digital device, pursuant to Part 15 of the FCC Rules. These limits are designed to provide reasonable protection against harmful interference in a residential installation. This equipment generates, uses and can radiate radio frequency energy and, if not installed and used in accordance with the instructions, may cause harmful interference to radio communications. However, there is no guarantee that interference will not occur in a particular installation. If this equipment does cause harmful interference to radio or television reception, which can be determined by turning the equipment off and on, the user is encouraged to try to correct the interference by one or more of the following measures:

Reorient or relocate the receiving antenna.

Increase the separation between the equipment and receiver.

Connect the equipment into an outlet on a circuit different from that to which the receiver is connected.

Consult the dealer or an experienced radio/TV technician for help.

- ! Changes or modifications not expressly approved by the party responsible for compliance could void the user's authority to operate the equipment.

Use only RF shielded cable that was supplied with the monitor when connecting this monitor to a computer device.

To prevent damage which may result in fire or shock hazard, do not expose this appliance to rain or excessive moisture.

THIS CLASS B DIGITAL APPARATUS MEETS ALL REQUIREMENTS OF THE CANADIAN INTERFERENCE-CAUSING EQUIPMENT REGULATIONS.

Commission Federale de la Communication (FCC Declaration)

Cet équipement a été testé et déclaré conforme aux limites des appareils numériques de class B, aux termes de l'article 15 Des règles de la FCC. Ces limites sont conçues de façon à fournir une protection raisonnable contre les interférences nuisibles dans le cadre d'une installation résidentielle. CET appareil produit, utilise et peut émettre des hyperfréquences qui, si l'appareil n'est pas installé et utilisé selon les consignes données, peuvent causer des interférences nuisibles aux communications radio. Cependant, rien ne peut garantir l'absence d'interférences dans le cadre d'une installation particulière. Si cet appareil est la cause d'interférences nuisibles pour la réception des signaux de radio ou de télévision, ce qui peut être décelé en fermant l'équipement, puis en le remettant en fonction, l'utilisateur pourrait essayer de corriger la situation en prenant les mesures suivantes:

Réorienter ou déplacer l'antenne de réception.

Augmenter la distance entre l'équipement et le récepteur.

Brancher l'équipement sur un autre circuit que celui utilisé par le récepteur.

Demander l'aide du marchand ou d'un technicien chevronné en radio/télévision.

- ! Toutes modifications n'ayant pas reçu l'approbation des services compétents en matière de conformité est susceptible d'interdire à l'utilisateur l'usage du présent équipement.

N'utiliser que des câbles RF armés pour les connections avec des ordinateurs ou périphériques.

CET APPAREIL NUMERIQUE DE LA CLASSE B RESPECTE TOUTES LES EXIGENCES DU REGLEMENT SUR LE MATERIEL BROUILLEUR DU CANADA.

North Europe Information (Nordic Countries)

Placering/Ventilation

VARNING:

FÖRSÄKRA DIG OM ATT HUVUDBRYTARE OCH UTTAG ÄR LÄTÅTKOMLIGA, NÄR DU STÄLLER DIN UTRUSTNING PÅ PLATS.

Placering/Ventilation

ADVARSEL:

SØRG VED PLACERINGSFOR, AT NETLEDNINGENS STIK OG STIKKONTAKT ER NEMT TILGÆNGELIGE.

Paikka/Ilmankierto

VAROITUS:

SIIJOITA LAITE SITEN, ETTÄ VERKKOJOHTO VOIDAAN TARVITTAESSA HELPOSTI IRROTTAA PIS-TORASIESTA.

Plassering/Ventilasjon

ADVARSEL:

NÅR DETTE UTSTYRET PLESSERES, MÅ DU PASSE PÅ AT KONTAKTENE FOR STØMTILFØRSEL ER LETTE Å NÅ.

Ergonomie Hinweis (nur Deutschland)

Der von uns gelieferte Farbmonitor entspricht den in der "Verordnung über den Schutz vor Schäden durch Röntgenstrahlen" festgelegten Vorschriften.

Auf der Rückwand des Gerätes befindet sich ein Aufkleber, der auf die Unbedenklichkeit der Inbetriebnahme hinweist, da die Vorschriften über die Bauart von Störstrahlern nach Anlage III 5 Abs. 4 der Röntgenverordnung erfüllt sind.

Damit Ihr Monitor immer den in der Zulassung geforderten Werten entspricht, ist darauf zu achten, daß

Reparaturen nur durch Fachpersonal durchgeführt werden.

nur original-Ersatzteile verwendet werden.

bei Ersatz der Bildröhre nur eine bauartgleiche eingebaut wird.

Aus ergonomischen Gründen wird empfohlen, die Grundfarben Blau und Rot nicht auf dunklem Untergrund zu verwenden (schlechte Lesbarkeit und erhöhte Augenbelastung bei zu geringem Zeichenkontrast wären die Folge).

Der arbeitsplatzbezogene Schalldruckpegel nach DIN 45 635 beträgt 70dB (A) oder weniger.

! ACHTUNG: BEIM AUFSTELLEN DIESES GERÄTES DARAUFGACHTEN, DAß NETZSTECKER UND NETZKABELANSCHLUß LEICHT ZUGÄNGLICH SIND.

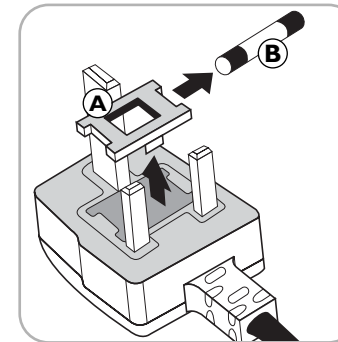
End-of-Life Disposal

Your new monitor contains materials that can be recycled and reused. Specialized companies can recycle your product to increase the amount of reusable materials and to minimize the amount to be disposed of.

Please find out about the local regulations on how to dispose of your old monitor from your local Philips dealer.

Information for UK only

WARNING — THIS APPLIANCE MUST BE EARTHED.

Important:

This apparatus is supplied with an approved moulded 13A plug. To change a fuse in this type of plug proceed as follows:

- 1 Remove fuse cover and fuse.
- 2 Fit new fuse which should be a BS 1362 5A, A.S.T.A. or BSI approved type.
- 3 Refit the fuse cover.

If the fitted plug is not suitable for your socket outlets, it should be cut off and an appropriate 3-pin plug fitted in its place.

If the mains plug contains a fuse, this should have a value of 5A. If a plug without a fuse is used, the fuse at the distribution board should not be greater than 5A.

Note: The severed plug must be destroyed to avoid a possible shock hazard should it be inserted into a 13A socket elsewhere.

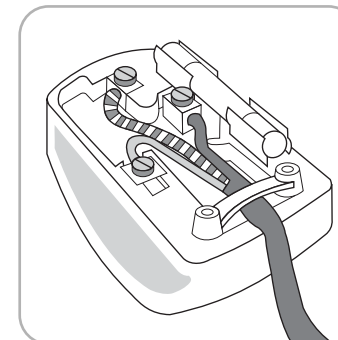
How to connect a plug

The wires in the mains lead are coloured in accordance with the following code:

BLUE - "NEUTRAL" ("N")

BROWN - "LIVE" ("L")

GREEN & YELLOW - "EARTH" ("E")



- 1 The GREEN AND YELLOW wire must be connected to the terminal in the plug which is marked with the letter "E" or by the Earth symbol \perp or coloured GREEN or GREEN AND YELLOW.
- 2 The BLUE wire must be connected to the terminal which is marked with the letter "N" or coloured BLACK.
- 3 The BROWN wire must be connected to the terminal which marked with the letter "L" or coloured RED.

Before replacing the plug cover, make certain that the cord grip is clamped over the sheath of the lead - not simply over the three wires.

Copyright

©2003 Koninklijke Philips Electronics N.V.

All rights reserved. Reproduction, copying, usage, modifying, hiring, renting, public performance, transmission and/or broadcasting in whole or in part is prohibited without written consent of Philips Electronics N.V.

Philips LCD Panel Pixel Defect Policy

Philips strives to deliver the highest quality products. We use some of the industry's most advanced manufacturing processes and practice stringent quality control. However, pixel or sub pixel defects on the TFT LCD panels used in flat panel monitors are sometimes unavoidable. No manufacturer can guarantee that all panels will be free from pixel defects, but Philips guarantees that any monitor with an unacceptable number of defects will be repaired or replaced under warranty. This notice explains the different types of pixel defects and defines acceptable defect levels for each type. In order to qualify for repair or replacement under warranty, the number of pixel defects on a TFT LCD panel must exceed these acceptable levels.

Bright Dot :

Dots(sub-pixels) which appeared brightly in the screen when the LCM displayed with dark pattern.

- R,G or B 1 dot ----- 2 Max
- Adjacent 2 dots ----- 1 Max
- Total amount of Bright dots ----- 2 Max
- Bright dot density ----- Min. 10mm

Dark Dot :

Dots (sub-pixels) which appeared darkly in the screen when the LCM displayed with bright pattern.

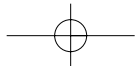
- 1 dot ----- 4 Max
- Adjacent 2 dots ----- 1 Max
- Adjacent 3 dots ----- Not Allowed
- Total amount of Dark dot ----- 4 Max
- Dark dot density ----- Min. 10mm

Total amount of Dot Defects ----- 4 Max. (Combination)

Note : a. Every dot herein means Sub-Pixel(Each Red, Green, or Blue Color)

b. Bright dot defect is not seen by 5% ND filter and is damaged less than third size of sub-pixel are not counted as bright dot defect. And dark dot defect is damaged less than half size of sub-pixel is not counted as dark dot defect.

c. Dots darker than half brightness of sub-pixel are not defined as bright dot defect and dots brighter than half brightness of sub-pixel is not defined as dark dot defect.



PO BOX 1533
DEPOSIT NY 13754-1533

PHILIPS

**TIME-DATED
MATERIAL
Please Open
Promptly!**

PLEASE
APPLY FIRST
CLASS
STAMP



IMPORTANT

PHILIPS
Warranty
Registration Card

**RETURN THE ATTACHED CARD WITHIN
TEN DAYS TO ENSURE YOUR:**

- ✓ Warranty Verification
- ✓ Owner Confirmation
- ✓ Model Registration

*See Inside For
Valuable
Benefits!*

