

Dishwasher

TD 425 U

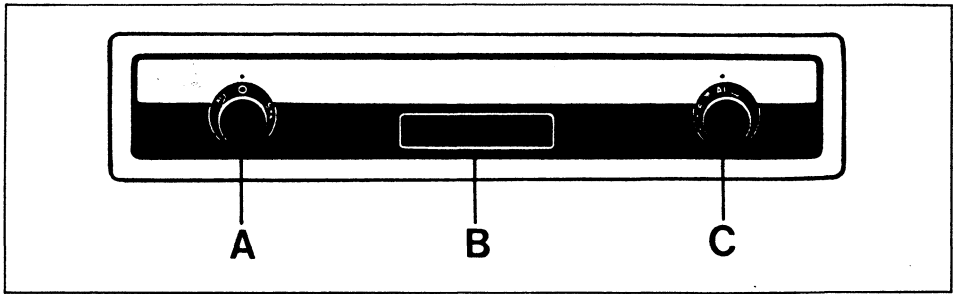
Operating instructions

TAUBER

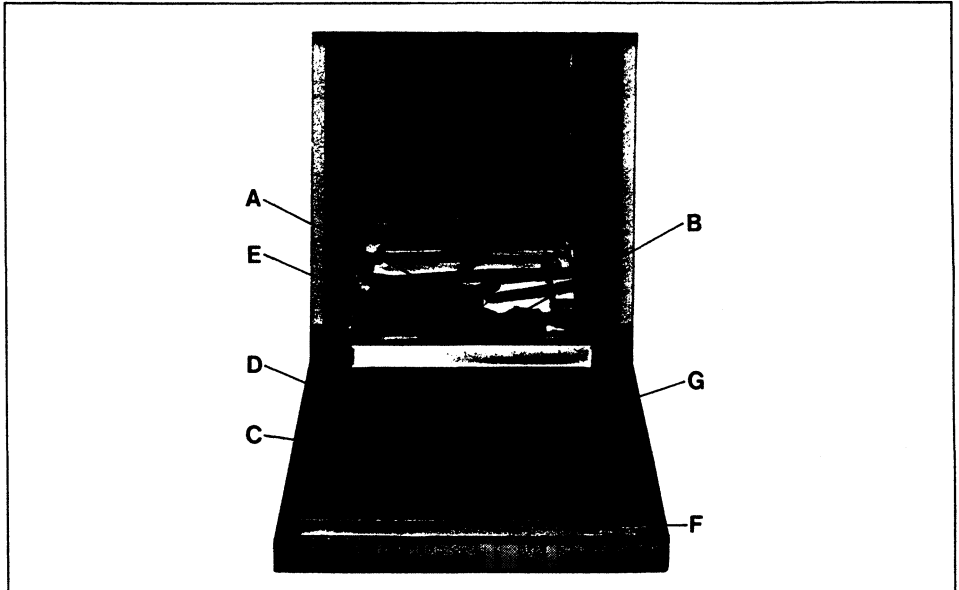
Be sure to read these instructions for use and keep them in a safe place.

The dishwasher must only be installed and connected by a specialist fitter. Our special notes for installation are given on pages 14–16.

Pages with illustrations which can be folded out	3– 5
Notes for operation	6–12
What to do if . . .	12–16



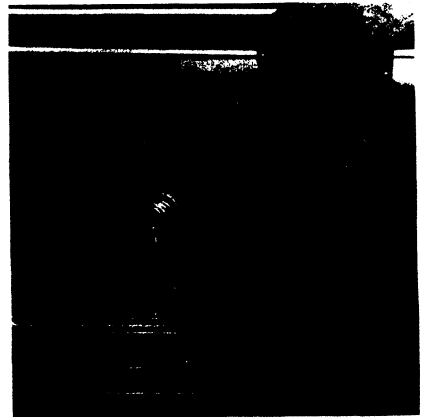
1



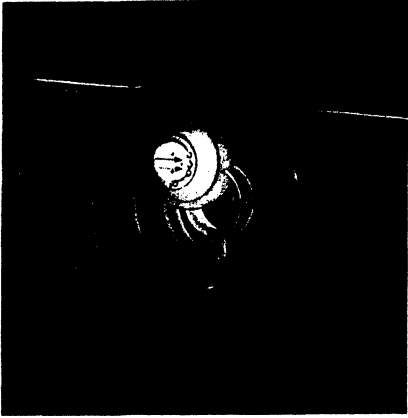
2



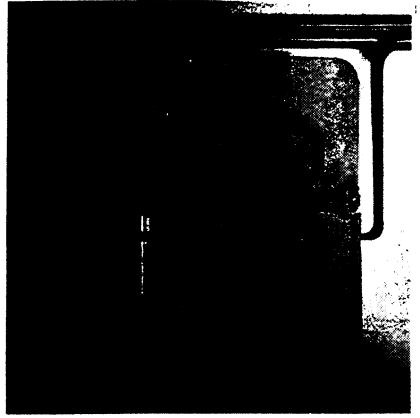
3



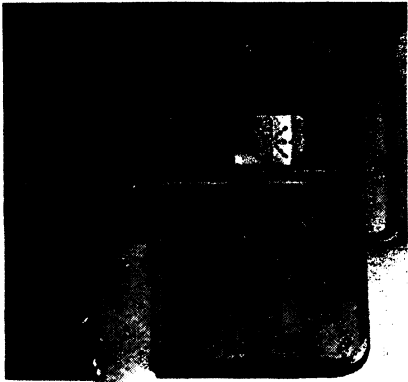
4



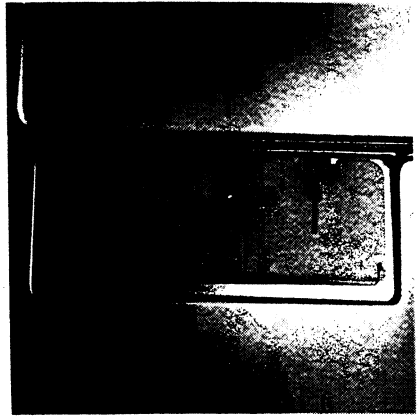
5



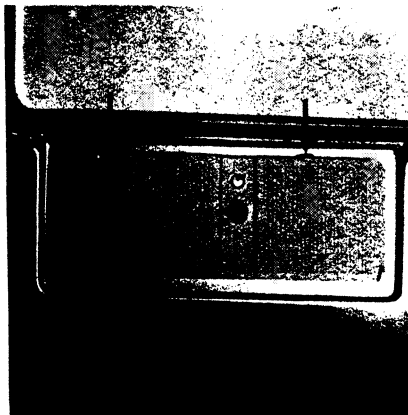
6a



6b



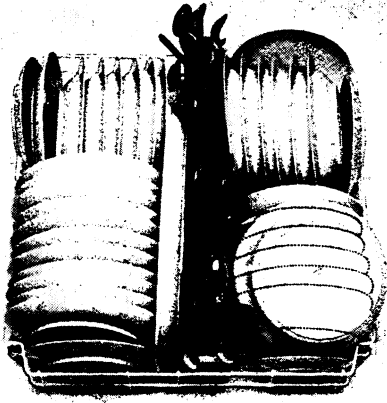
7a



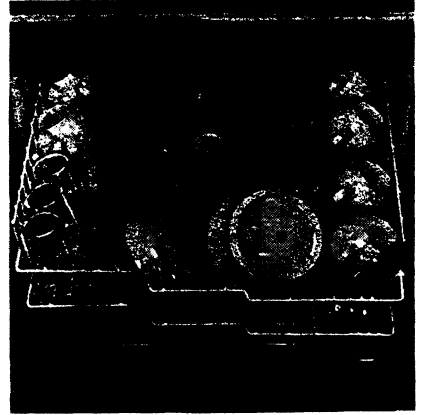
7b



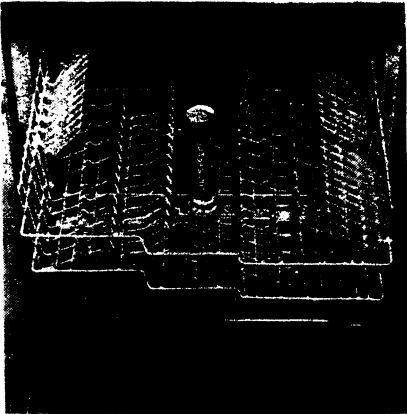
8



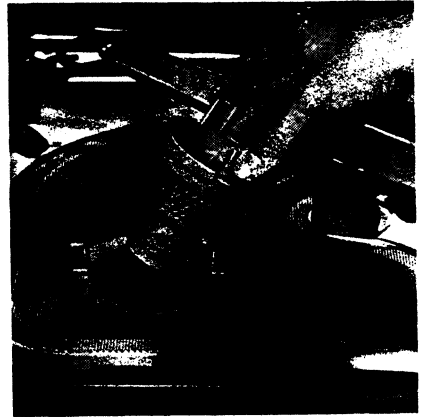
9



10



11



12



13



14

Control panel/Interior

Please unfold pages 3, 4, 5, for easy reference.

Control panel

Figure 1

- A Programme selector
- B Door handle
- C Programme switch and programme sequence indicator.

Interior

Figure 2

- A Lower spray arm
- B Salt container
- C Detergent dispenser
- D Rinse aid container
- E Filters
- F Programme summary
- G Rating plate (with E and F numbers)

What to do before you use your dishwasher for the first time:

Fill the salt container with dishwasher salt

Figure 3

At the factory the machine has been set for a water hardness of ●●● (from 26 to 48 degrees) (see fig. 5).

If the water hardness in your area is between 16-26 degrees, set the water hardness selector to ●● (from 16 to 26 degrees). (¼ turn, arrow pointing down.)

For settings ●● and ●●● you need to fill the salt container with dishwasher salt.

The salt is required to regenerate the water softening unit which is built into your machine.

If the water hardness is below 16 degrees the machine does not require any salt and the water hardness setting is immaterial. Your local Water Authority will tell you the degree of water hardness in your area.


Important

The salt you require is special salt suitable for domestic dishwashers. On no account should table salt, cooking salt, road salt or processed sea salt be used, because they contain substances which interfere with the operation of the dishwasher.

Be careful not to fill any detergents into the salt container, this can damage the water softener.

Should the water hardness in your area vary from time to time, use the higher setting.

The salt container filler neck is situated on the right hand side on the bottom of the tub (fig. 2/B).

To fill the container – open the door, lift out the lower basket, unscrew the cap marked  and place the funnel supplied with the machine over the opening.

Before the first use only, pour 1½ to 2 litres (3-4 pints) of water into the salt container.

Then fill in the salt until it is visible at the top of the container. During the filling process, some water is displaced. Remove any spilled salt from the filler neck and replace the top firmly. Replace the lower basket.

Important

No salt residues must be left on the bottom of the tub. To ensure that all salt residues are removed select a rinse and hold programme or, if you have enough used crockery, a complete wash programme after the salt container has been filled.

Replenish the salt container when the “red” marker is visible in the indicator window on the screw cap of the salt container (fig. 2/B).

What to do before you use your dishwasher for the first time:

Fill the rinse aid container with rinse aid

Figure 4

Rinse aid is dispensed automatically during the final hot rinse. It prevents water drops from clinging to the crockery and gives the final sparkle to the china and glassware.

Important

Use only rinse aids suitable for domestic dishwashers – we recommend Finish.

Never use normal washing up liquids.

You will find the rinse aid container on the inside of the door (**fig. 2/D**). Open the container by pressing the locking catch (**fig. 7/arrow**) and slowly pour rinse aid into the filler neck until the rinse aid remains in the filler neck. Close the container. The container will take approx. 180 ccm, which will last for approx. 60 programmes. Wipe off any spilled rinse aid to prevent excess foaming during the next wash cycle.

Replenish the rinse aid container when the level indicator window is "light" in colour (**see fig. 6 a + b/arrow**).

Adjusting the rinse aid dosage

Figure 6 a + b

A pre-set quantity of rinse aid (approx. 3 ccm) is dispensed automatically during the final rinse (**fig. 6/switch**).

You can increase this amount if white/grey water marks appear on the crockery or decrease the amount if the dishes are smeared.

Alter the rinse aid dosage according to the relevant markings.

What to do before you use your dishwasher for the first time:

Add dishwasher detergent before every wash programme

Figure 8

Before you start a wash programme (except rinse and hold programme) fill powder detergent into the detergent dispenser (**fig. 2/C**).

If the dispenser is closed push the locking catch (**fig. 7/arrow**) and the lid springs open.

The amount of detergent to use depends on the degree of soiling of the utensils to be washed. For light soiling you will require approx. 1½ tablespoons, for normal to heavy soiling approx. 2 tablespoons.

Close the lid of the dispenser and press until it snaps shut. The detergent is automatically dispensed at the correct stage of the programme.

- Always close the detergent pack and store in a dry place (lumpy detergent has lost its cleaning power).

- Always use the recommended amount of detergent.

If you use too much, excessive foaming will occur and the cleaning result will be poor. If you use too little, deposits will remain on the dishes which can only be rubbed off by hand.

Important

- **Only use detergents for domestic dishwashers.** Never use washing up liquids (they cause excessive foaming and the dishes are not cleaned).

Important hints to help you use your dishwasher correctly

Economical washing

Collect the dirty dishes and stack them in your dishwasher. Only select a full wash programme when both baskets are full. A rinse and hold programme can be selected during the day to prevent food soil from drying on before a full load has been collected.

Please also note:

“On glaze” decorations may fade if washed frequently in the dishwasher over a long period of time.

Check earthenware for “dishwasher proof” descriptions.

Aluminium articles have a tendency to discolour when machine washed.

Some glassware may not be suitable for machine washing. Etching could occur leaving the glasses dull and opaque in appearance.

Unsuitable articles: wooden chopping boards, heat sensitive plastic articles, pewter, crockery repaired with glue, cracked china, old cutlery, steel knives sensitive to rust, cutlery, with wood, bone china and mother-of-pearl handles.

If in doubt about an article check with the manufacturer of the article where possible. Failing this, wash valuable items by hand.

Loading the machine

Figure 9 and figure 10

Before you load the machine remove any surplus food and bones from the plates and soak saucepans with burnt on food as you would when washing up by hand.

The easiest way to load a basket is from back to front.

Lower basket

Large heavily soiled dishes are best cleaned in the lower basket. Pull out the lower basket as far as the stops and stack it with large items: plates, serving dishes and serving plates and saucepans as illustrated.

Cutlery basket

The cutlery baskets are placed into the machine one behind the other (fig. 9). Both baskets can be moved to the right or the left. For a small quantity of cutlery use only one basket.

Arrange the cutlery as follows:

- Distribute the unsorted cutlery loosely in all basket compartments so that each item is reached by the wash water.
- Handles down for best results.
- Make sure spoons do not stick together. Use the special holders for tea and coffee spoons.
- Lay long handled utensils flat in the upper basket to avoid blocking the upper spray arm.

Upper basket

Smaller, more fragile items are washed gently in the upper basket. Pull out the upper basket as far as the stop to arrange the smaller items such as saucers, cups, glasses as illustrated. You can also use the fold down racks to load extra cups.

Important

By aranging the dishes correctly you will ensure a satisfactory wash result.

- Stack cups, glasses, saucepans, etc. upside down so that the water can run off freely.
- Extremely curved plates and similar items should be stacked in every other bracket so that each item is reached by the wash water.
- Load glasses so that they do not touch each other (to prevent stains and breakages).
- When stacking items on and under the folding racks in the upper basket make sure that the water sprays can reach both layers.

Programmes switching on

Switching on

Programme chart – see next page.

1. Turn on the water supply.
2. Turn the programme switch (**fig. 1/C**) clockwise to symbol A, B or C.
3. Turn the programme selector (**fig. 1/A**) to the required programme to start the programme.

Programme Sequence Indicator

Figure 1/C

The programme switch has 4 symbols apart from A, B and C. These 4 symbols indicate the various programme stages:



wash with detergent



pre-rinse or intermediate rinse



final rinse with rinse aid



hot air drying

The indicator stops temporarily during the wash and the final rinse until the water has reached the required temperature.

Programme Correction

If you have selected the wrong programme by mistake simply turn the programme selector to the correct programme.





Warning!

Before turning the programme switch, switch off the machine.

Switching off

The dishwasher switches itself off automatically when the programme is finished.

- Turn the programme selector to the "0" position.
Turn off the water supply.
- Then open the door (steam will escape from the tub) and leave it slightly ajar. Wait approx. 15 minutes before unloading the machine. If the dishwasher is built-under and the underside of your work surface is not protected against moisture or if it has a solid wood edge, leave the dishwasher door **closed** and unload when the crockery is completely dry.
- Empty the lower basket first and then the upper basket. This prevents any water which may have collected in recessed or curved items in the upper basket from dripping onto crockery in the lower basket.
- Check the filters after every programme. If they are dirty clean them as per instructions on page 12.

Programmes	Suitable for:	Turn programme switch to symbol:	Turn programme selector to:	Programme sequence:	Programme duration in minutes on cold water supply	Energy-consumption (kWh) on cold water supply	Water consumption in litres
Rinse and hold	Rinsing heavily soiled items which are not washed immediately	A		Pre-rinse	9	0.1	8
Normal 65 °C	Normally to heavily soiled china and saucepans with dried on food deposits (particularly vegetables such as spinach, carrots etc.)	B		Pre-rinse, Wash, Intermediate rinsing, Final rinse, Drying	80	2.1	32
Normal 50 °C	Normally soiled crockery and temperature sensitive items (e.g.: glasses, plastic ware)	B		Pre-rinse, Wash, Intermediate rinsing, Final rinse, Drying	75	1.6	32
Economy 50 °C	Normally to lightly soiled crockery and glasses	C		Wash, Intermediate rinsing, Final rinse, Drying	59	1.5	24

Cleaning the filters

Coarse filter

Figure 12

Remove the coarse filter and brush it clean under running water. Check the lower half of this filter also and remove the food residues which may be trapped there. Note that the upper cylindrical section of the coarse filter can be lifted out (fig. 13).

When replacing ensure that the upper section sits straight and tight before re-inserting the coarse filter.

Maintenance

Fascia panels and controls must not be cleaned with abrasive cleaning materials or furniture polish. Should cleaning be necessary use lukewarm water.

Fine filter

Figure 14

Clean the fine filter as and when necessary. To remove the fine filter turn it anticlockwise. Clean it thoroughly. When replacing the fine filter make sure that the edge of the filter forms a proper seal with the bottom of the tub. Then turn it clockwise.

Never carry out a wash programme without a filter.

What can be the cause... if something does not work?

Before you call out a service engineer check the following points carefully, it will save you embarrassment, trouble and the cost of the engineer calling on you.

What can be the cause ...

(if something does not work?)

... The programme does not start?

- Are the fuses in working order?
- Is the door closed properly?
(There is a short pause after the machine has filled with water!)

... No water is in the machine?

- Have you turned on the tap?
- Check the water inlet hose (it must not be kinked).

... The dishes are not clean?

- Did you select the correct programme?
The programme has to be chosen according to the degree of soiling.
- Did you stack the dishes according to our recommendations?
The water sprays must have access to the dishes from all sides – the baskets should not be overloaded.

- Were the spray arms able to rotate freely?
After stacking and inserting the baskets you should always make sure that the spray arms can revolve freely.
- Are the filters clean? Have you inserted the filters properly after cleaning?
- Did you use sufficient detergent?
- Did you top up the salt container?
If the water hardness in your area is over 16 degrees and your dishwasher is operated without salt, the result may be affected adversely and white and yellow chalk deposits will remain on your dishes.
- Did you select the correct degree of water hardness according to the information of your local Water Authority? (See also page 6.)

What can be the cause...if something does not work?

What can be the cause...

(if something does not work?)

... The dishes are not dry and sparking?

- Did you use a rinse aid recommended by us?
- Did you fill up the rinse aid container?

... Please check the rinse aid level indicator on the inside of the door.

- Is the correct quantity of rinse aid being dispensed?
If too little is used, white/grey water marks will appear, particularly on glasses.
If too much is used, opaque or blueish smears will appear, particularly on glasses and they may even feel sticky.

... There are rust spots in the machine?

- The stainless steel tub, the inner door and the filters cannot rust. If you find rust spots, these are introduced with the water or due to rust on cutlery, saucepans, etc. Did you select a rinse and hold programme or a complete wash programme after filling the salt container? Remove such stains with a stainless steel cleaner.

Service

Use our check-list on pages 12/13 to make sure you cannot rectify the fault yourself.

- If you call out a service engineer in connection with one of the problems listed the cost involved will have to be passed on to you even during the warranty period. The same applies to wrong usage or misuse of the machine.
- Therefore, follow the instructions and recommendations in this booklet carefully.
- Should you be unable to locate the cause of the problem in spite of the check-list please contact your AEG Service Department and do not carry out any repairs particularly electrical ones yourself.

When calling for a service engineer please quote the model no. and the serial no. of your machine.

These nos. are printed on the rating plate (fig. 2/G).

Fill in these numbers for your future reference.

E-No. (E-No.)

and the

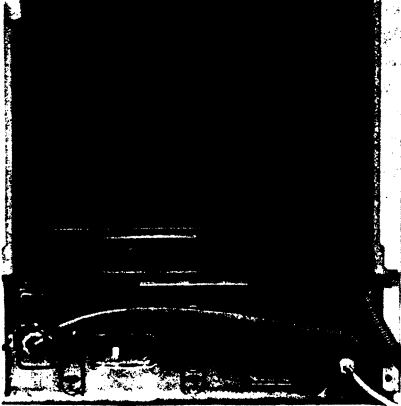
Serial-No. (F-No.)

These numbers enable our Service Department to **prepare** spare parts to repair the machine on first call wherever possible to save you money.

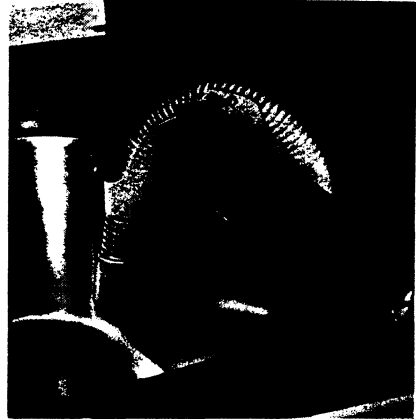
Information for the installer

Drainage hose

At the rear of the machine the drainage hose is secured with plastic straps which must be removed. Route the drainage hose along the recess provided at the rear of the dishwasher.



When connecting the hose to a similar trap with an appliance discharge connection it is important to raise the hose to the underside of the worktop and secure it in this position with the hose holder provided. This will prevent



water from the sink entering the machine drainage hose. The outlet end of the hose is 19 mm diameter and should fit any available sink trap connections and is secured by means of the hose clip supplied.

Baskets

To protect the baskets against damage during transport, they are secured with corrugated

cardboard and polystyrene all of which must be removed.

Installation

The appliance must stand level and on a firm base.

The floor should be clean and free from floor polish and grease. The appliance has adjustable feet at the front. If necessary adjust front feet.

Should the machine be built under a worktop in a built-in kitchen, it is necessary to remove the table top of the machine. To comply with the Safety Regulations, the machine must be installed in such a way that there is no access to live parts or internal connections with functional insulation.

If you have a build-under machine (U-version) see enclosed installation instructions.

Please note (this applies to free-standing appliances with worktop only). Should a dishwasher be installed next to a gas, solid fuel or electric cooker due to lack of space, a heat insulating panel (85 x 57.5 cm) has to be fitted, the side facing the cooker has to be lined with aluminium foil.

Information for the installer

Water supply

To protect the drinking water supply system, your dishwasher is fitted with an anti-syphon.

A connection to a hot water supply up to a maximum of 70 °C with a minimum pressure of 1 bar is possible, **although the machine must not be connected to single outlet instantaneous electric or gas heaters.**

Please ensure you comply with the drinking water regulations of your local Water Board.

The high pressure hose ($\frac{3}{8}$ " = 10 mm, 1.35 m long) with $\frac{3}{4}$ " hose coupling complete with sealing washers is supplied. We recommend not to use other washers which may be of inferior quality. It is sufficient to tighten the nuts by hand but if a spanner is used proceed very carefully.

The machine may be connected

- directly to a tap with $\frac{3}{4}$ " B.S.P. thread termination
- to a T-junction on your existing tap, or preferably
- to a completely separate water supply in order to avoid interference with the kitchen water supply during operation of the machine.

Minimum water pressure: approx. 1 bar pressure above atmospheric pressure (1 atü = approx. 1 kp/cm² = approx. 10 N/cm²).

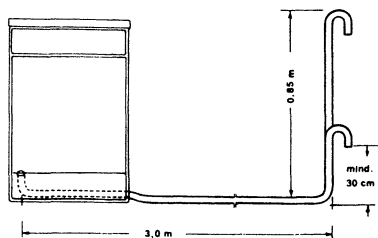
For less than one bar of pressure above atmospheric pressure, consult the Service Department. Maximum permissible water pressure: approx. 10 bars. For over 10 bars excess pressure, connect a pressure relief valve (obtainable through your installer).

If a longer water supply hose is needed it should be a single run of high pressure bursting strength of 60 bars. Do not add extensions to hoses. Under no circumstances should cheap garden hoses or similar types be used. Please also ensure that the hoses are connected by means of screw connections with suitable hose clips.

Turn off the water tap if the machine is not in use.

It is not unusual to find a small amount of water in your new dishwasher which remains from our thorough factory checks.

Water discharge



Your dishwasher is fitted with a water pump, controlled by the programme to pump off the water up to a height of 1 m. The minimum height above floor level should always be 30 cm. (The maximum extension, when installed horizontally, is 3 m, at a height of 85 cm above floor level). Should it become necessary to extend the drainage hose, use only original extension hoses. These are

available in lengths of 2.70 and 4.0 metres as spares from your AEG Service Department.

The recess at the back of the machine offers sufficient space to accommodate the outlet hose for installation to the left or right of the machine. When connecting the outlet hose make sure that it lies freely in the recess at the back of the machine and is neither kinked nor crushed on the floor. The crooked end of the drainage hose must be hooked on or attached otherwise at a minimum height of approx. 30 cm above floor level.

When connecting to a trap with appliance connection – without drainage hose extension – the internal diameter of the connection must be 15 mm minimum.

Electrical connection

WARNING! This appliance must be earthed.

Please note: The plug moulded on to the cord incorporates a fuse. For replacement, use a 13 amp BS 1362 fuse. Only ASTA approved or certified fuses should be used. The fuse cover/carrier must be replaced in the event of changing the fuse. The plug must not be used if the fuse cover/carrier is lost. A replacement cover/carrier must be obtained from authorised electrical goods retailers. If the socket outlets in your home are not suitable for the plug fitted to the appliance, then the plug must be cut off and an appropriate one fitted. When fitting the plug please note the following points:

IMPORTANT.

The wires in the mains lead are coloured in accordance with the following code:
GREEN AND YELLOW – EARTH
BLUE – NEUTRAL
BROWN – LIVE

As the colours of the wires in the mains lead of this appliance may not correspond with the coloured markings identifying the terminals in your plug proceed as follows:

1. The wire which is coloured GREEN and YELLOW must be connected to the EARTH terminal in your plug, which is marked with the letter E or by the earth symbol or coloured GREEN, or GREEN and YELLOW.
2. The wire which is coloured BROWN must be connected to the LIVE terminal which is marked with the letter L or coloured RED.
3. The wire which is coloured BLUE must be connected to the NEUTRAL terminal which is marked with the letter N or coloured BLACK.

When wiring the plug, ensure that all strands of wire are securely retained in each terminal. Do not forget to tighten the mains lead clamp on the plug.

Technical data

Capacity according to IEC Publ. 436:

12 place settings including serving dishes.
Water pressure 1 to 10 bar.

The dishwasher complies with the radio interference requirements of the EEC Directives 76/889/EEC and 82/499/EEC.

Decor panel dimensions:

Free-standing appliances (where fitted):
H 590 x W 580 mm.

Panel thickness in frame: max. 4 mm.

Build-under appliances: H 590 x W 585 mm.

Panel thickness in frame: max. 4 mm.

Total panel thickness: max. 8 mm.

The consumption values quoted in the product information refer to the normal 65 °C programme.

Loading example for 12 place settings including serving dishes according to IEC Publ. 436

One place setting contains:

1 soup dish, diameter about 24 cm
1 dinner plate, diameter approximately 24 cm
1 dessert plate, diameter approximately 19 cm
1 teacup, diameter approximately 9 cm
1 saucer, diameter approximately 14.5 cm
1 tumbler, diameter approximately 7 cm
approximately ¼ litre size
1 knife
1 fork
1 teaspoon
1 spoon
1 dessertspoon

One serving setting contains:

1 oval platter
approximately 37.5 x 26 cm
1 round bowl, diameter approximately 21.5 cm, height approximately 10 cm
1 round bowl, diameter approximately 17 cm, height approximately 7.8 cm
1 fruit dish, diameter approximately 15 cm
1 serving fork
2 serving spoons
1 gravy spoon